

GAZİ ÜNİVERSİTESİ FEN FAKÜLTESİ İSTATİSTİK BÖLÜMÜ

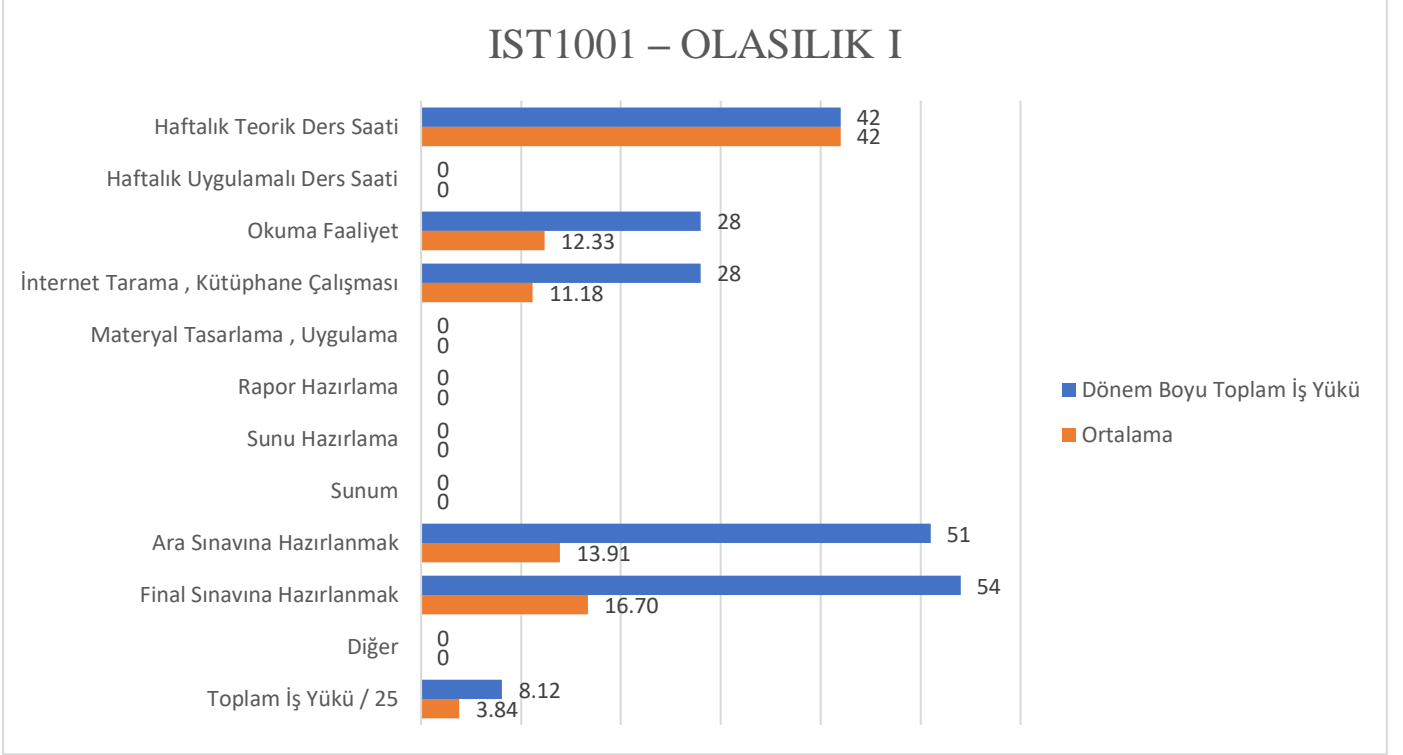
2020-2021 EĞİTİM-ÖĞRETİM YILI GÜZ YARIYILINDA UYGULANAN

DERS İŞ YÜKÜ ANKETLERİ

KISA DEĞERLENDİRME SONUÇLARI

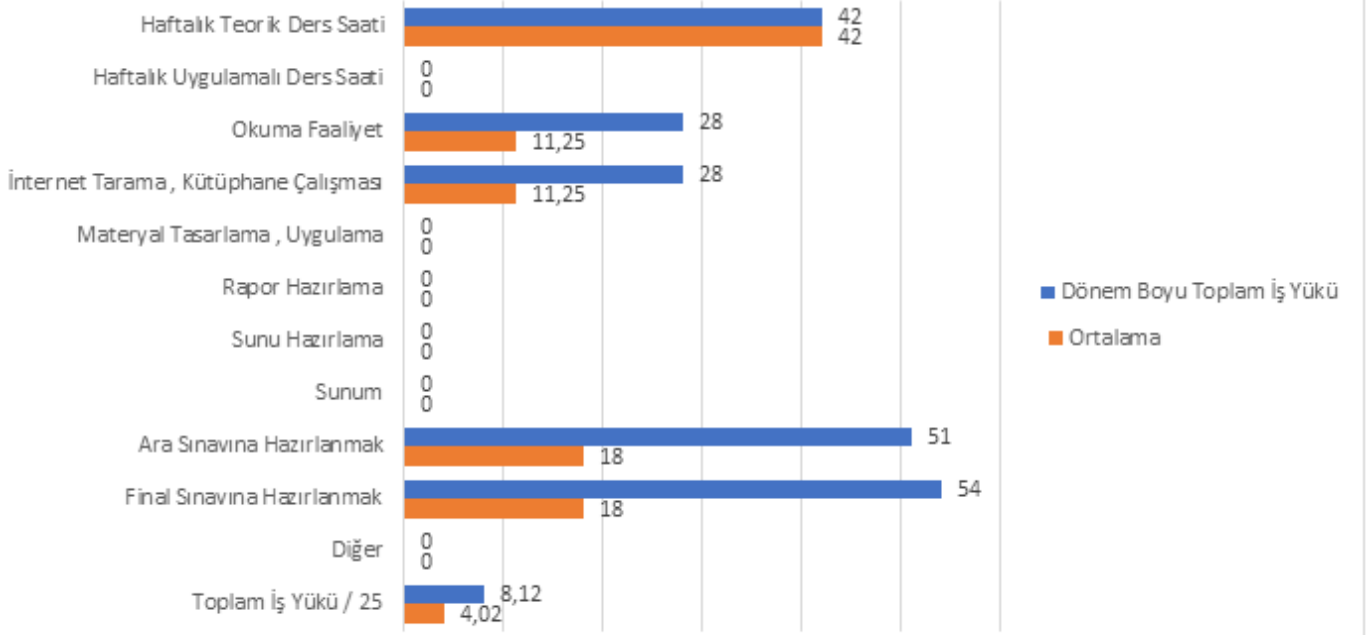
İstatistik bölümünde yürütülen 2020-2021 güz dönemi dersleri için oluşturulmuş ders iş yükü anketine göre elde edilen sonuçlara yönelik grafikler aşağıda verilmiştir. Bu grafiklere bakıldığında birçok dersin teorik iş yükleri ile öğrencinin değerlendirdiği iş yükleri arasında önemli farklılık görülmektedir. Bunun sebebi, pandemi döneminde yürütülen derslerin yüz yüze eğitim verilen dönemlerdeki gibi, dersleri işleme olanağının olamamasından kaynaklanabilir.

IST1001 – OLASILIK I (A)

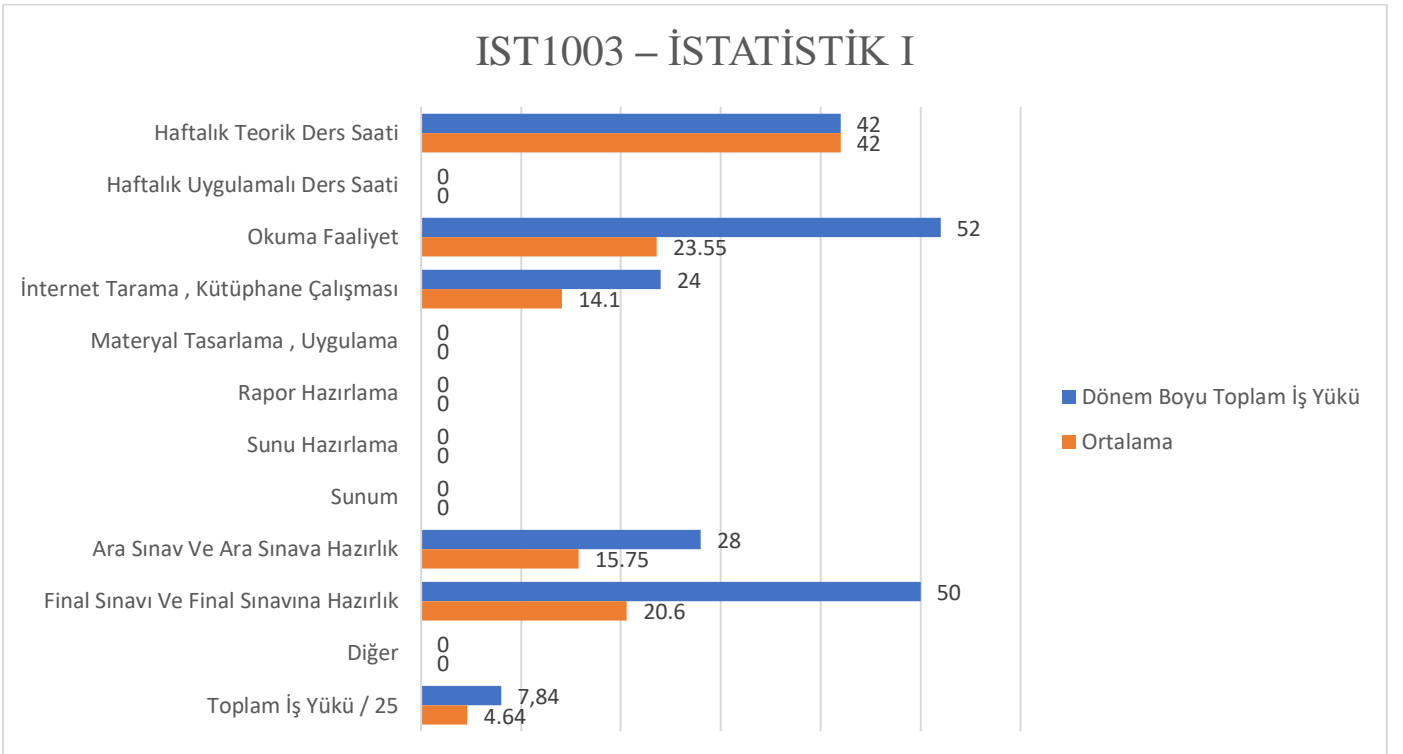


IST1001 – OLASILIK I (B)

IST1001 – OLASILIK I

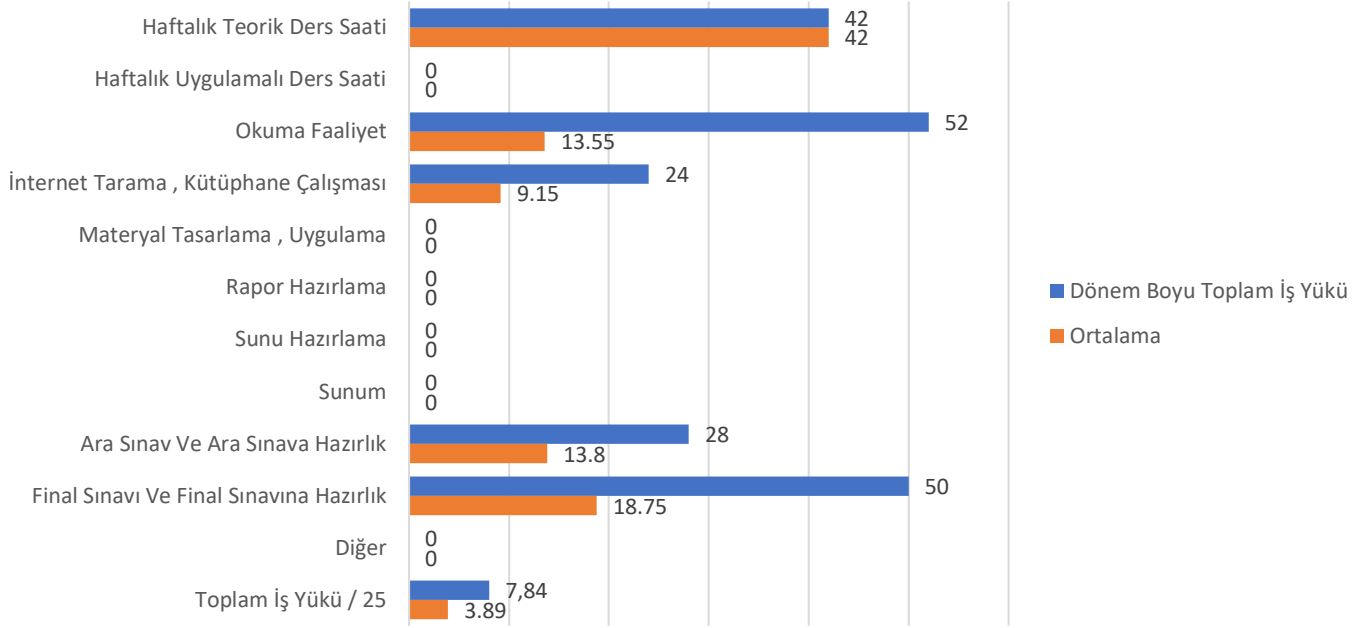


IST1003 – İSTATİSTİK I (A)

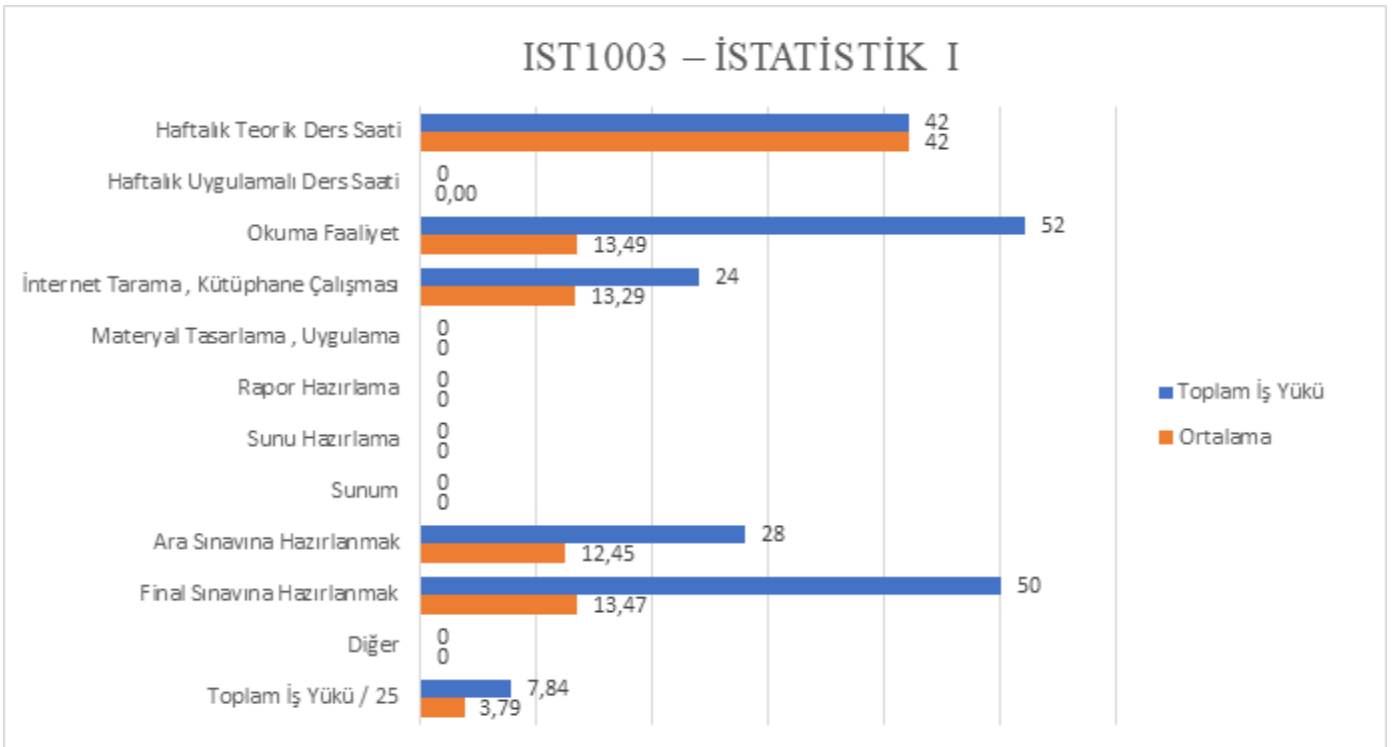


IST1003 – İSTATİSTİK I (B)

IST1003 – İSTATİSTİK I

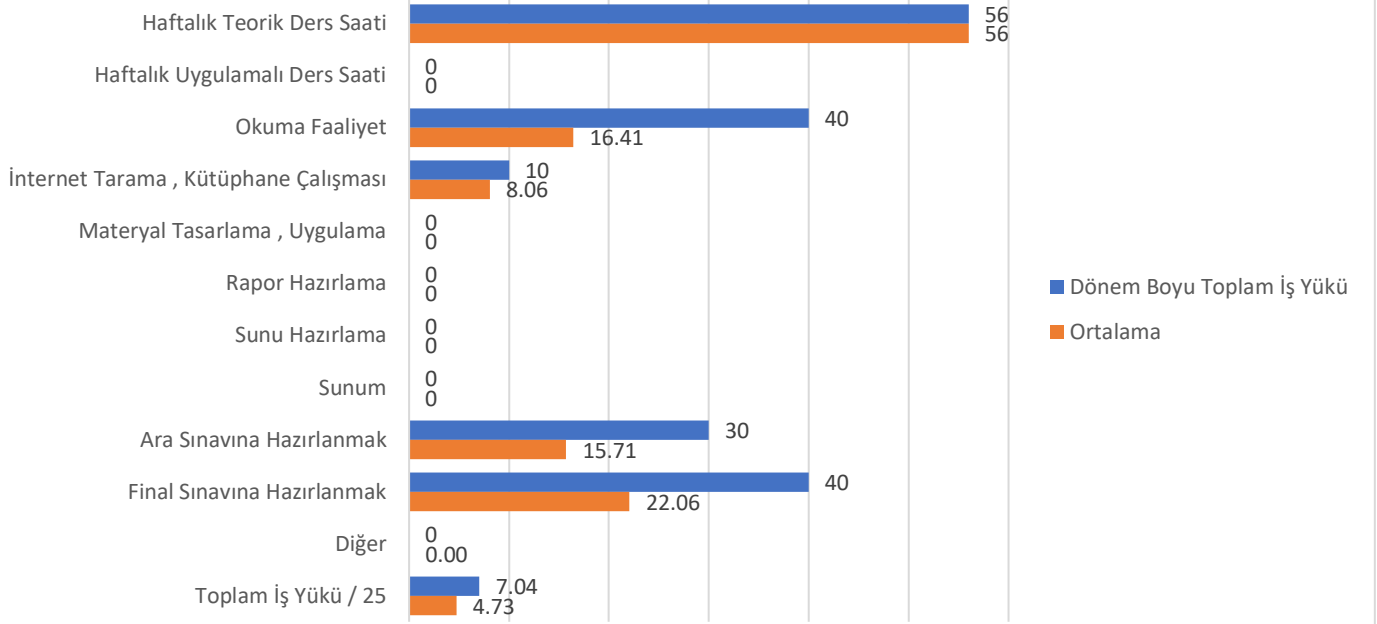


IST1003 – İSTATİSTİK I (C)

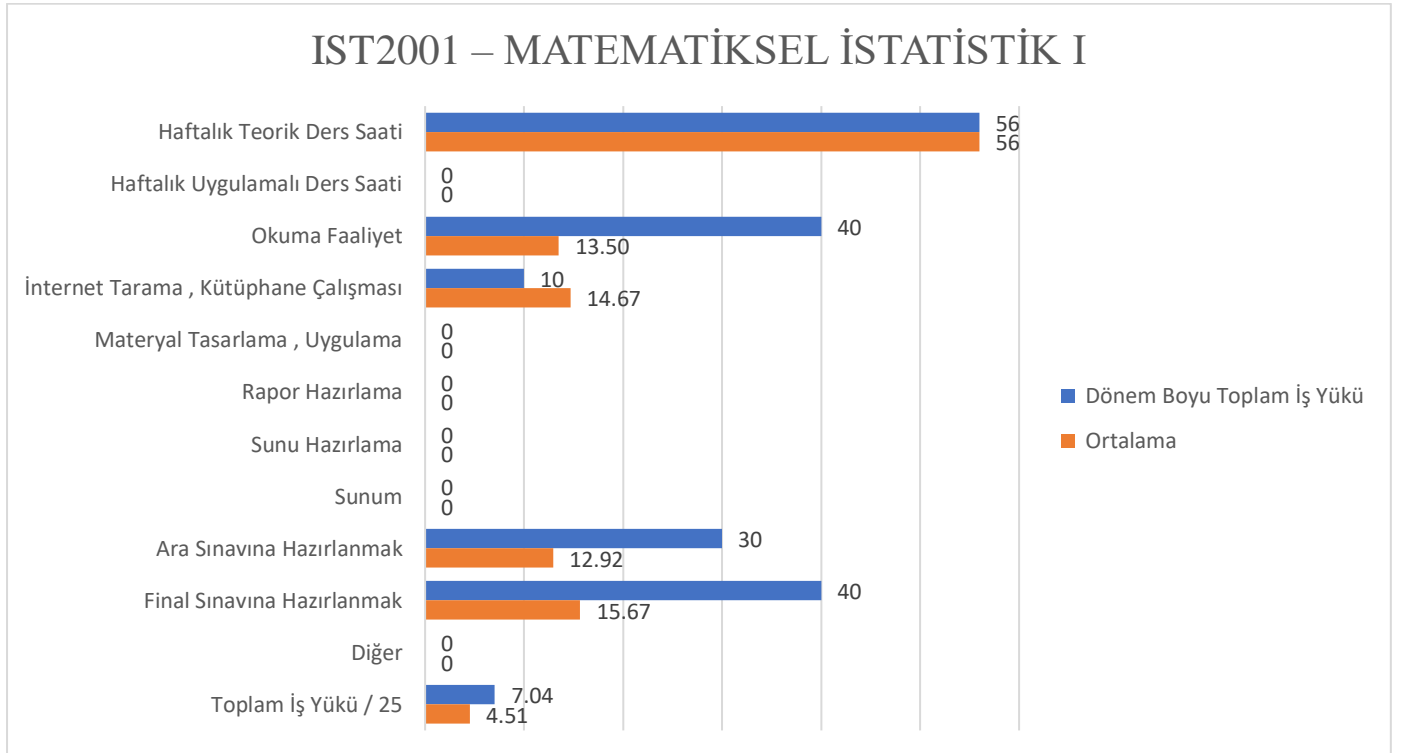


IST2001 – MATEMATİKSEL İSTATİSTİK I (A)

IST2001 - MATEMATİKSEL İSTATİSTİK I

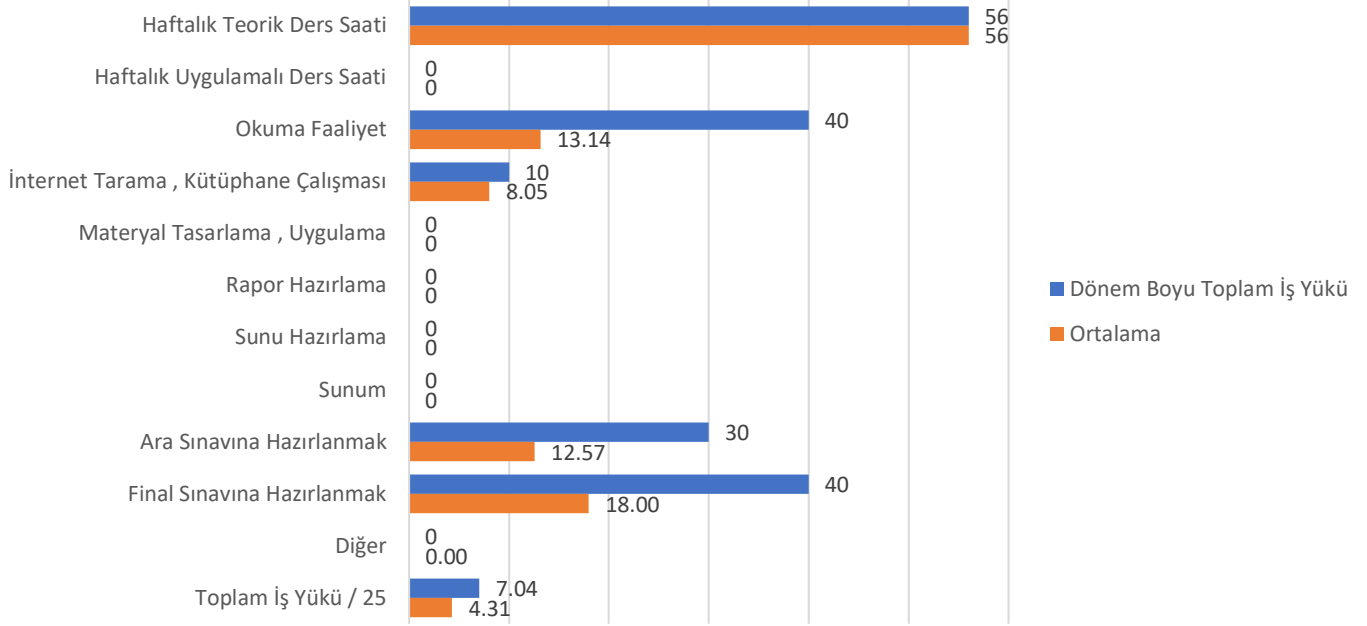


IST2001 – MATEMATİKSEL İSTATİSTİK I (B)

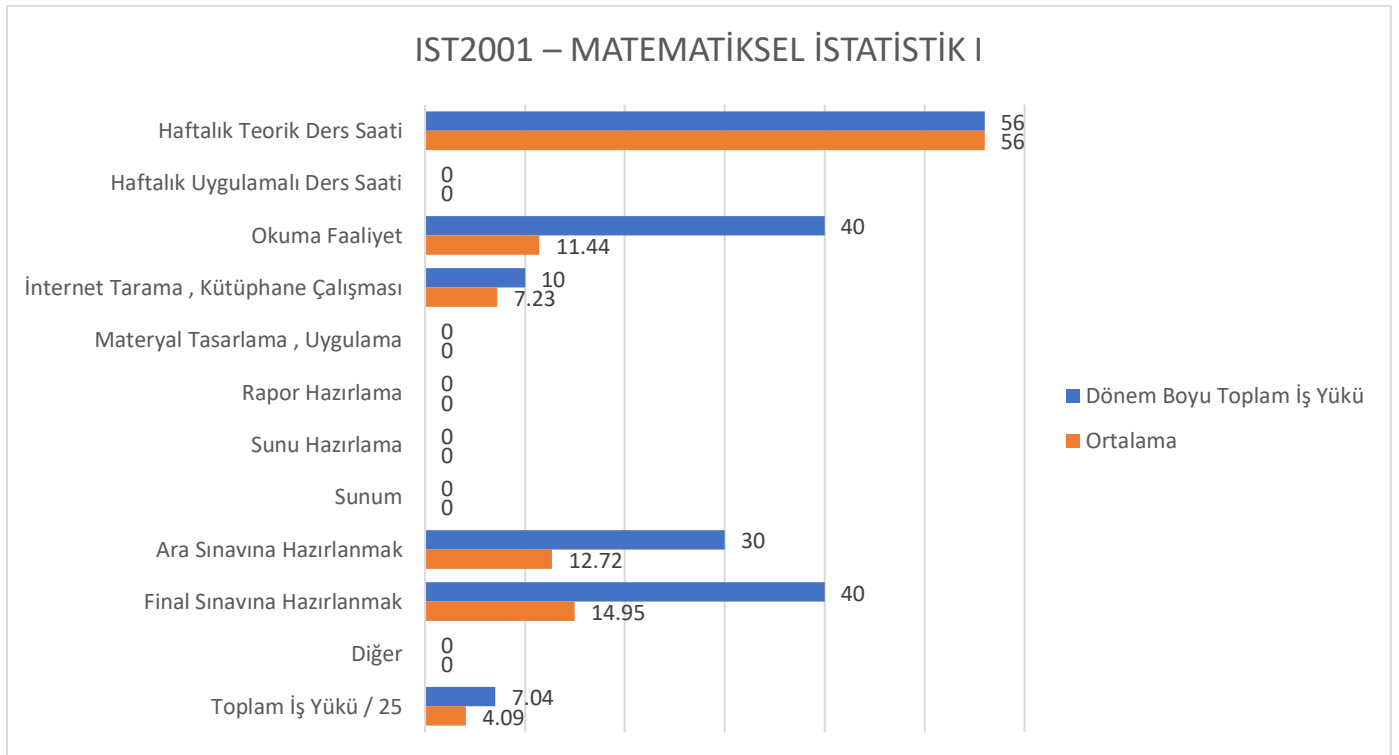


IST2001 – MATEMATİKSEL İSTATİSTİK I (C)

IST2001 – MATEMATİKSEL İSTATİSTİK I

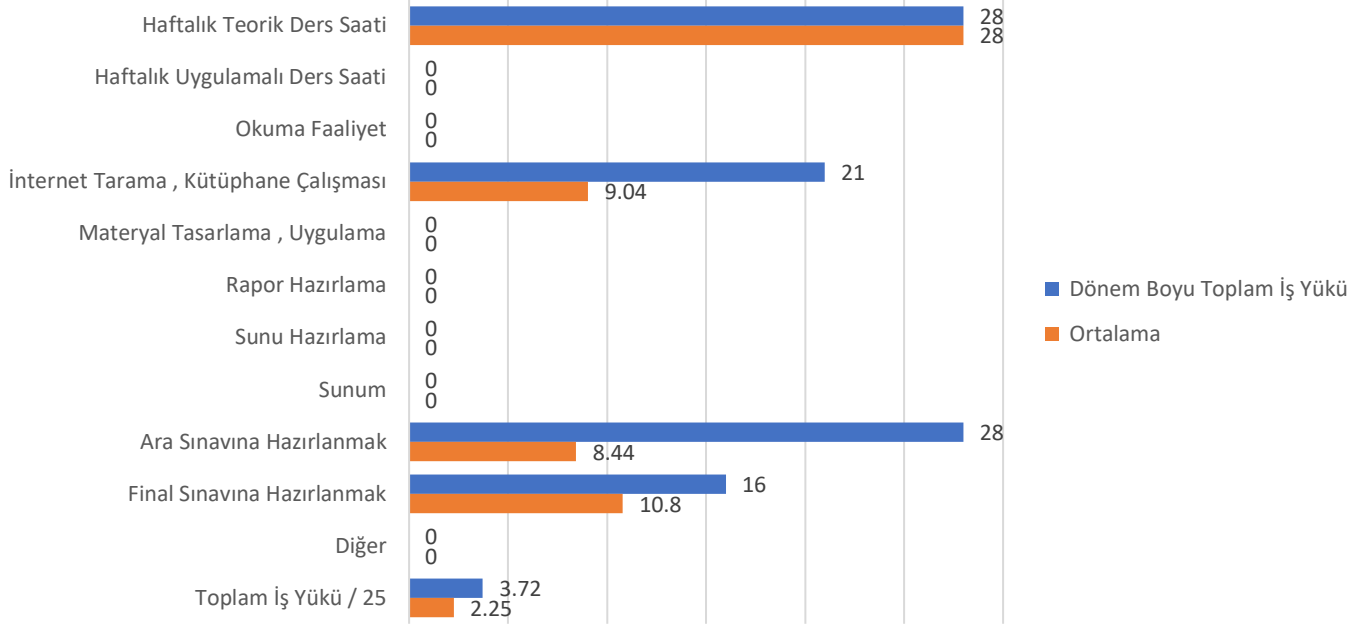


IST2001 – MATEMATİKSEL İSTATİSTİK I (D)



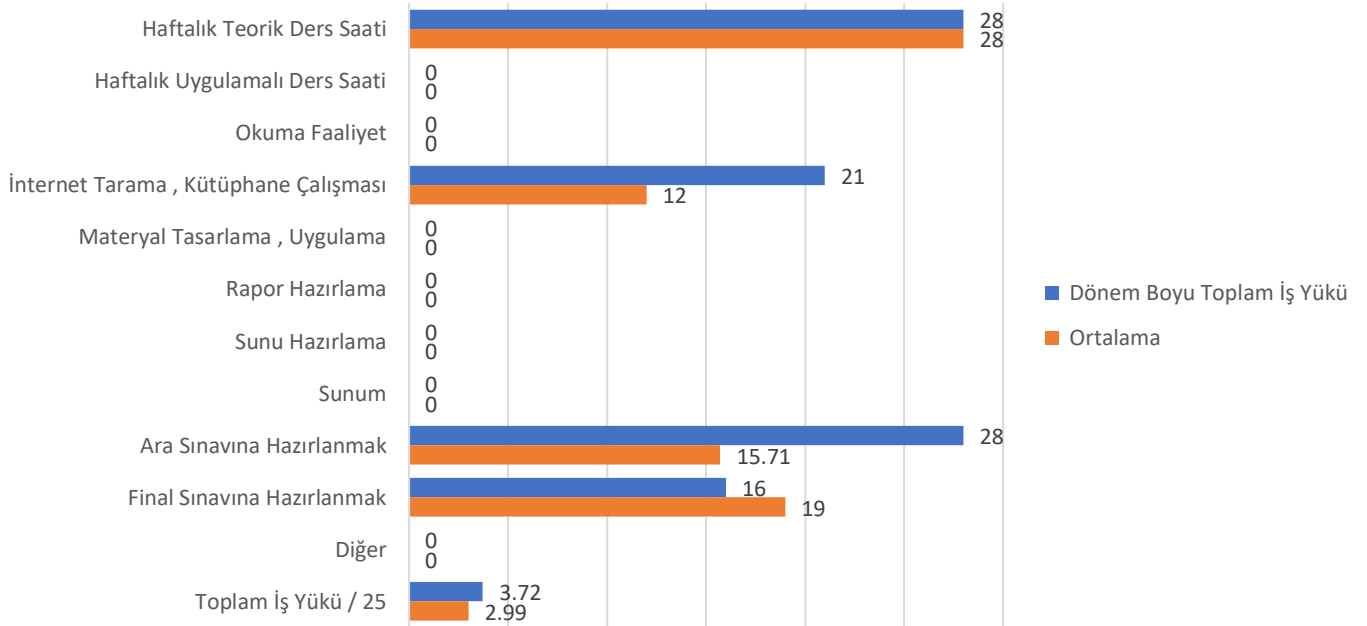
IST2003 – ALGORİTMA TASARIMI (A)

IST2003 – ALGORİTMA TASARIMI



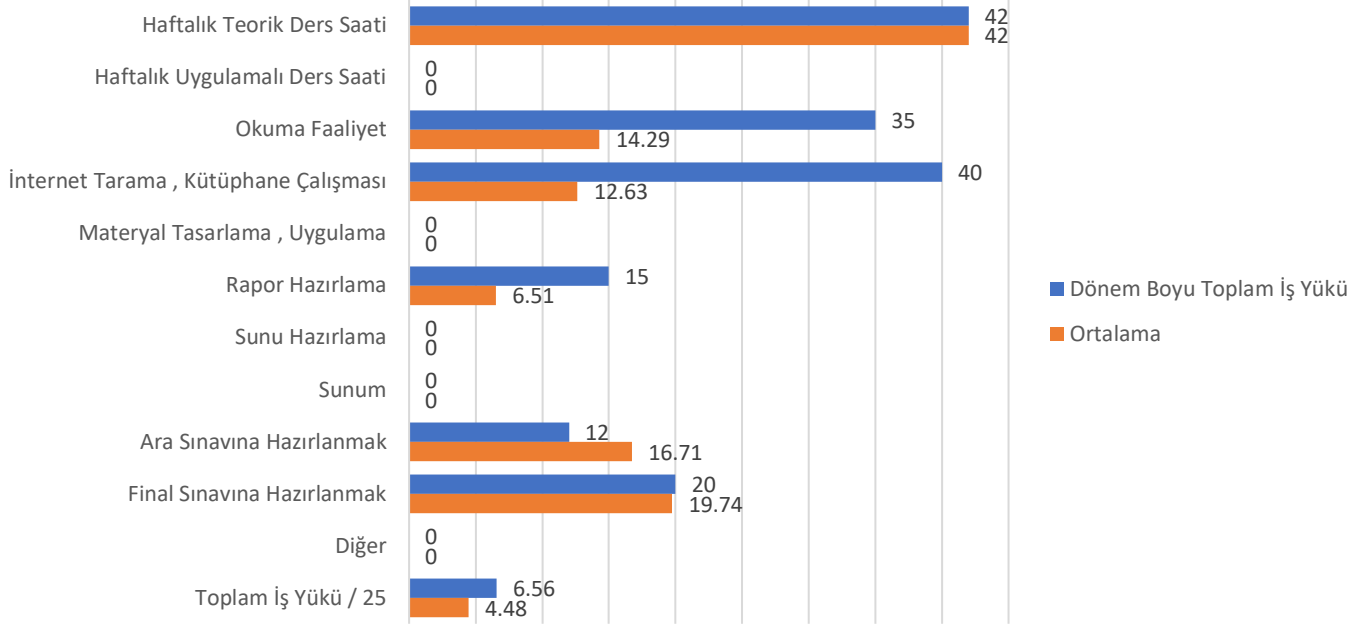
IST2003 – ALGORİTMA TASARIMI (B)

IST2003 – ALGORİTMA TASARIMI

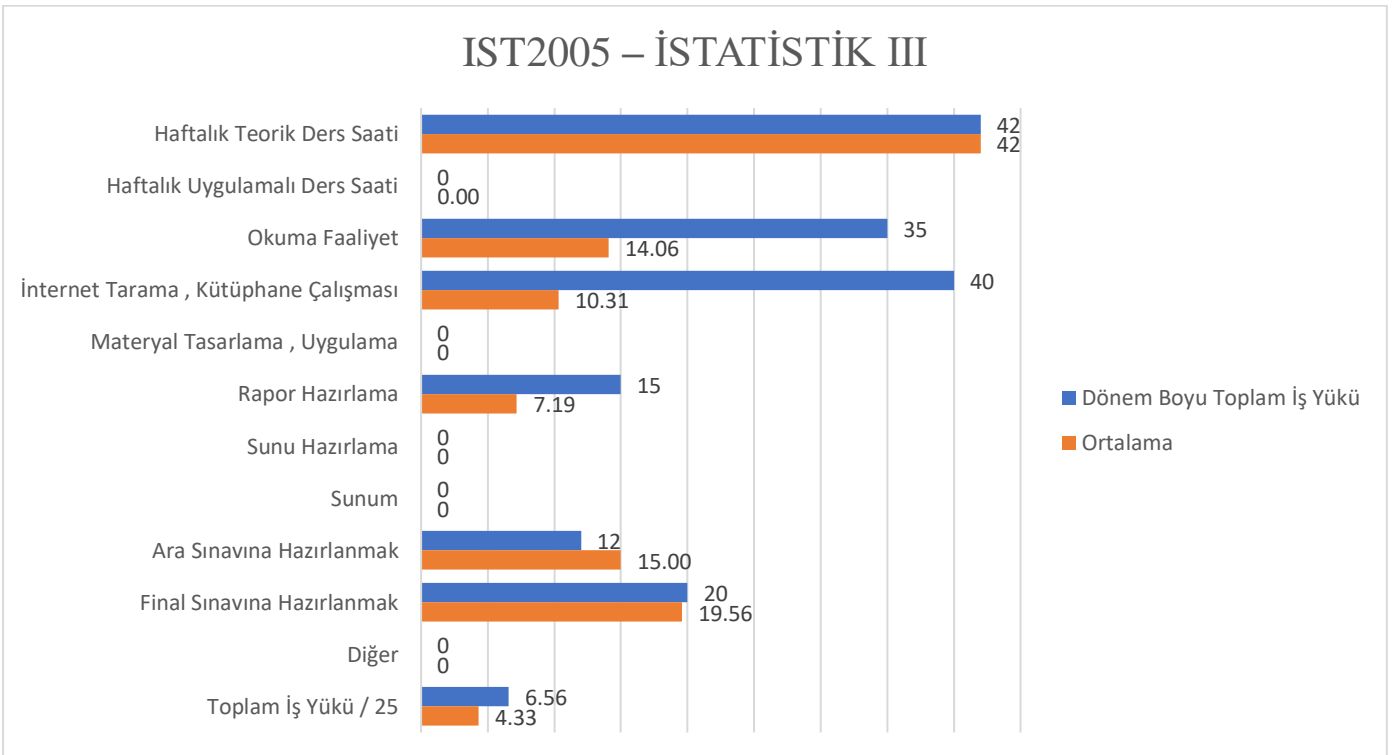


IST2005 – İSTATİSTİK III (A)

IST2005 – İSTATİSTİK III

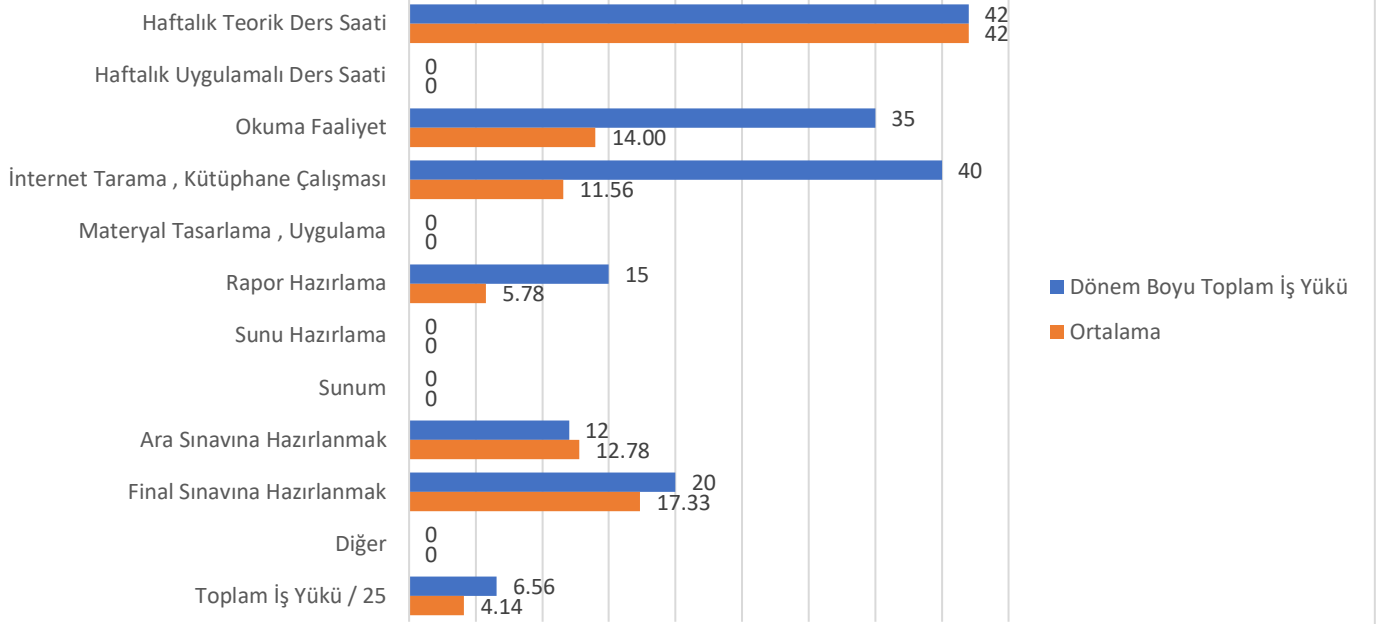


IST2005 – İSTATİSTİK III (B)



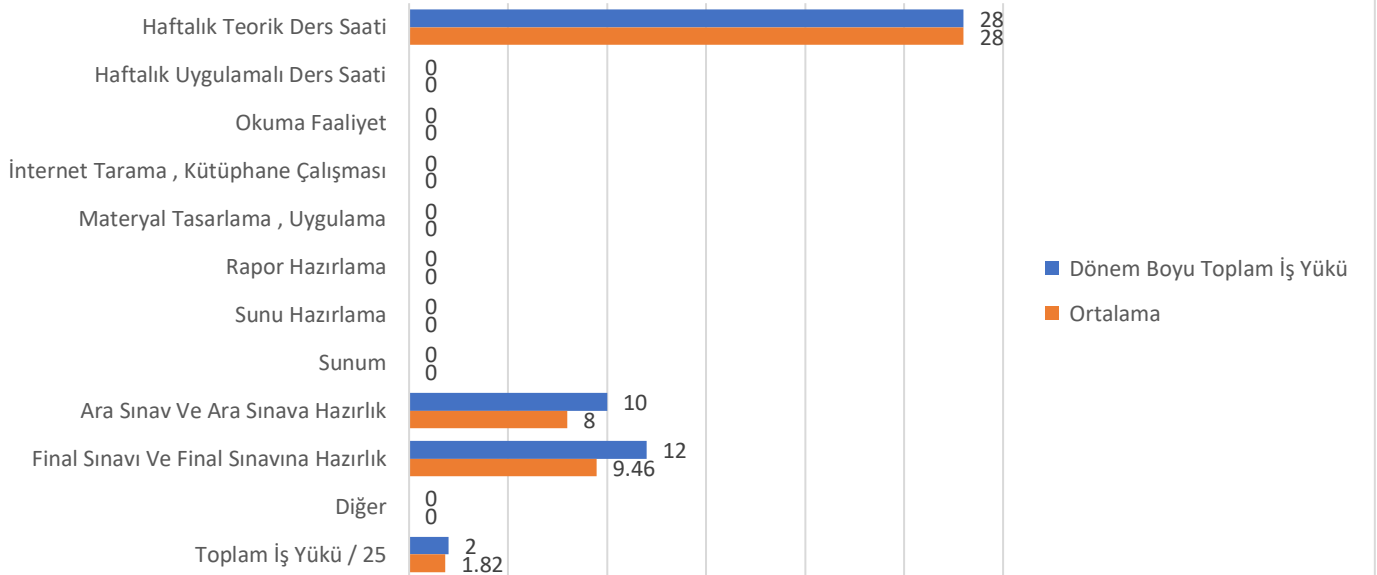
IST2005 – İSTATİSTİK III (C)

IST2005 – İSTATİSTİK III



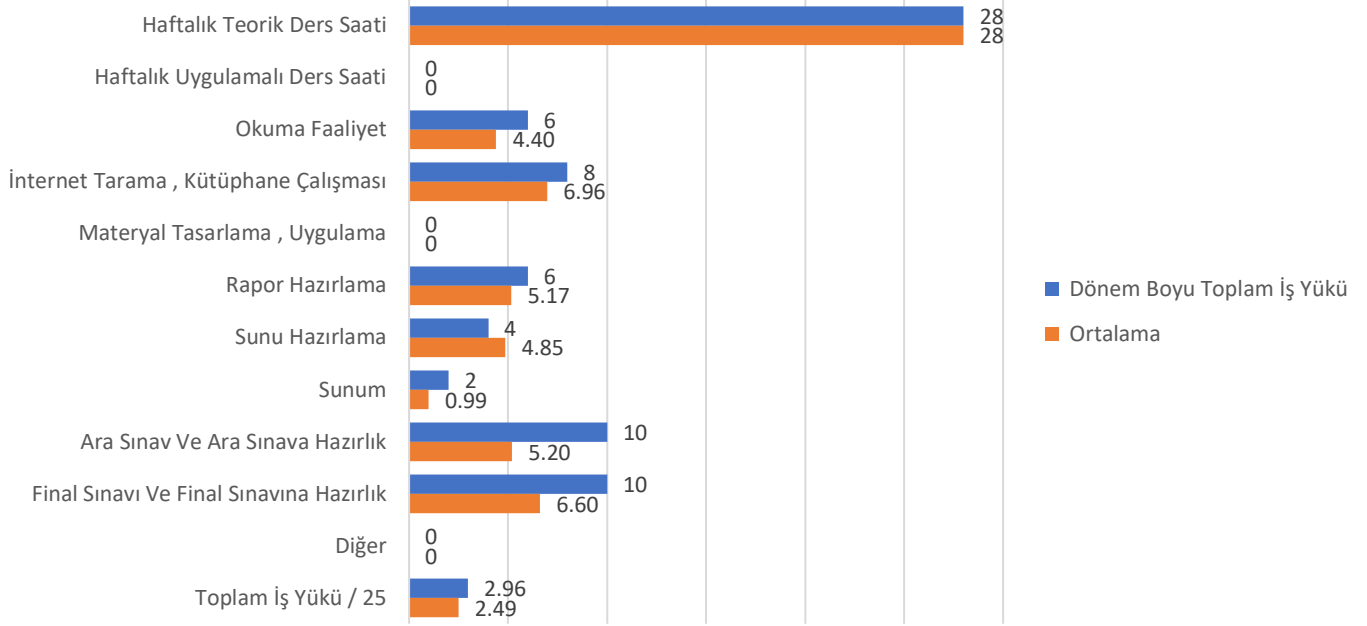
IST2041 – İSTATİSTİKTE TEMEL BİLİŞİM TEKNOLOJİLERİ

IST2041 – İSTATİSTİKTE TEMEL BİLİŞİM TEKNOLOJİLERİ

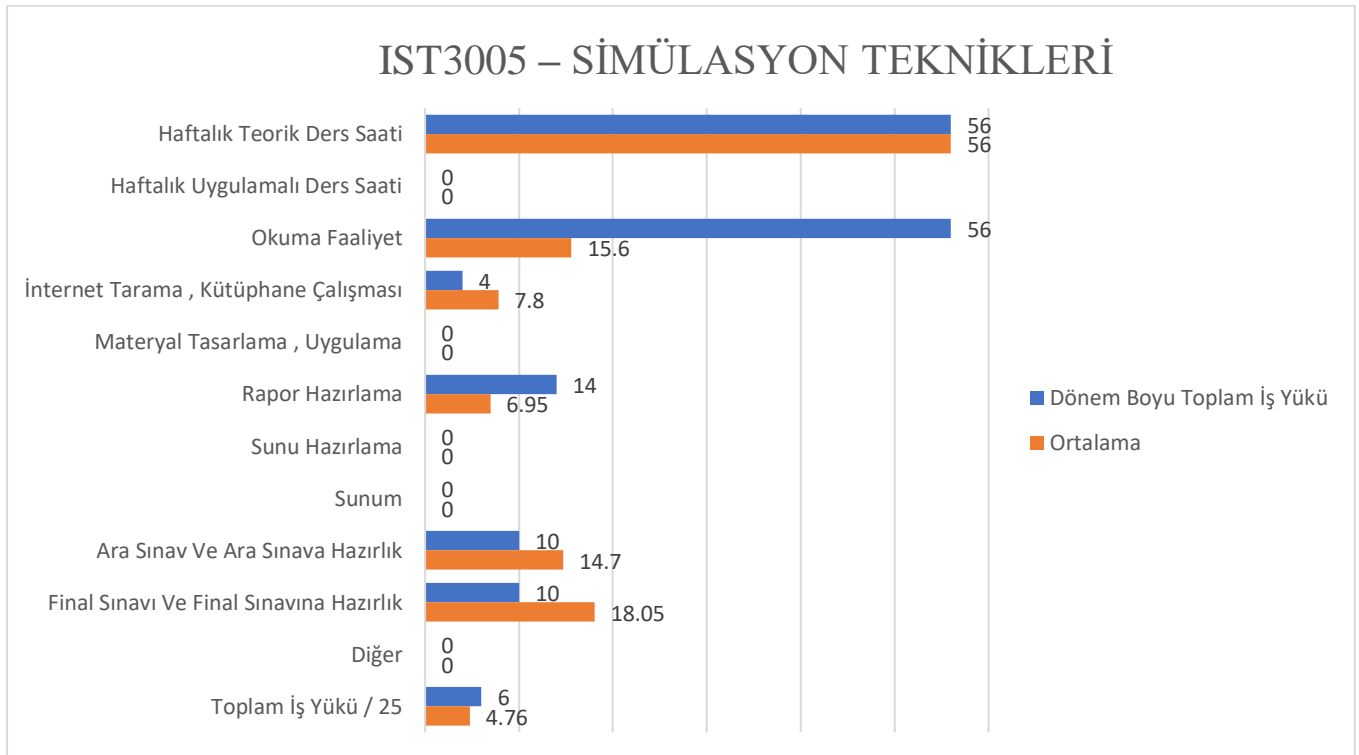


IST2043 – İSTATİSTİK VE AKILLI YAKLAŞIMLAR

IST2043 – İSTATİSTİK VE AKILLI YAKLAŞIMLAR

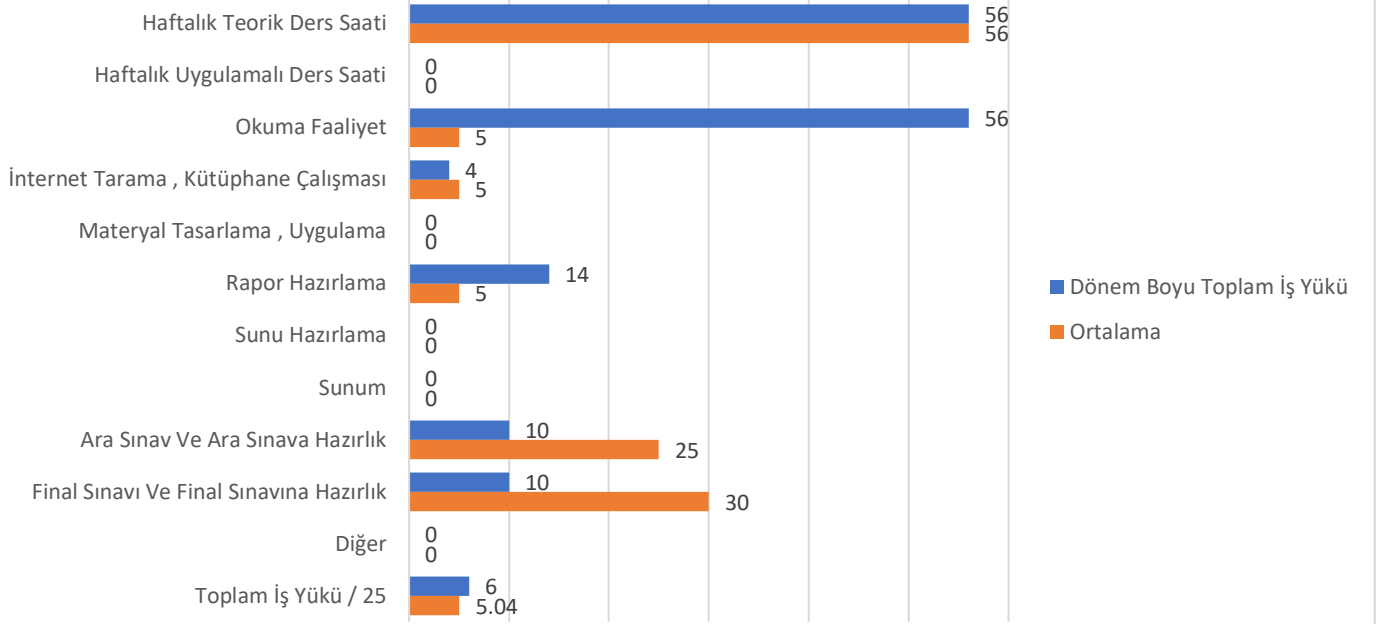


IST3005 – SİMÜLASYON TEKNİKLERİ (A)



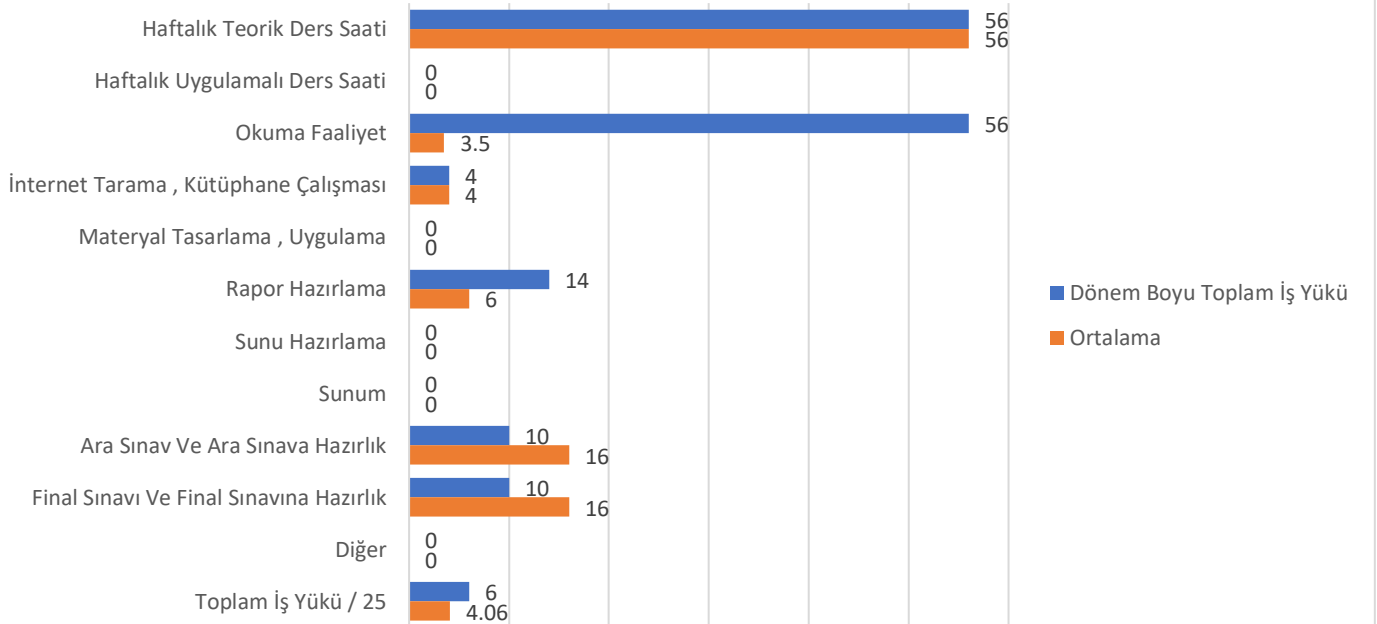
IST3005 – SİMÜLASYON TEKNİKLERİ (B)

IST3005 – SİMÜLASYON TEKNİKLERİ



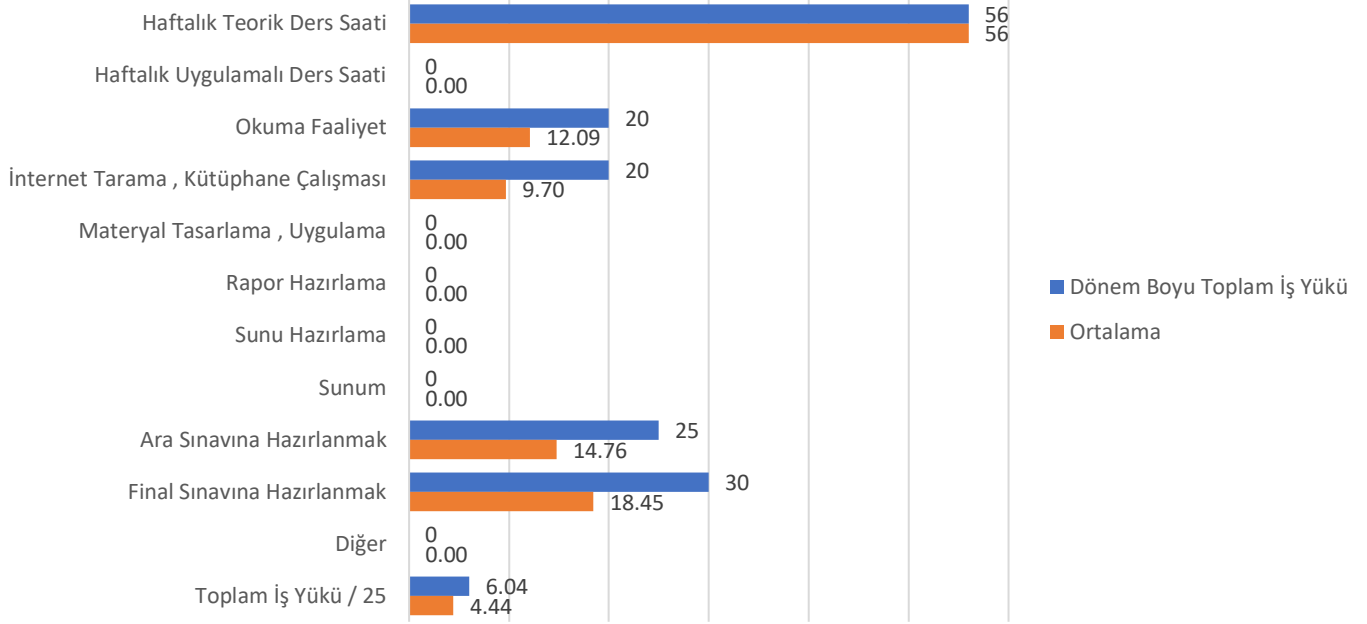
IST3005 – SİMÜLASYON TEKNİKLERİ (C)

IST3005 – SİMÜLASYON TEKNİKLERİ



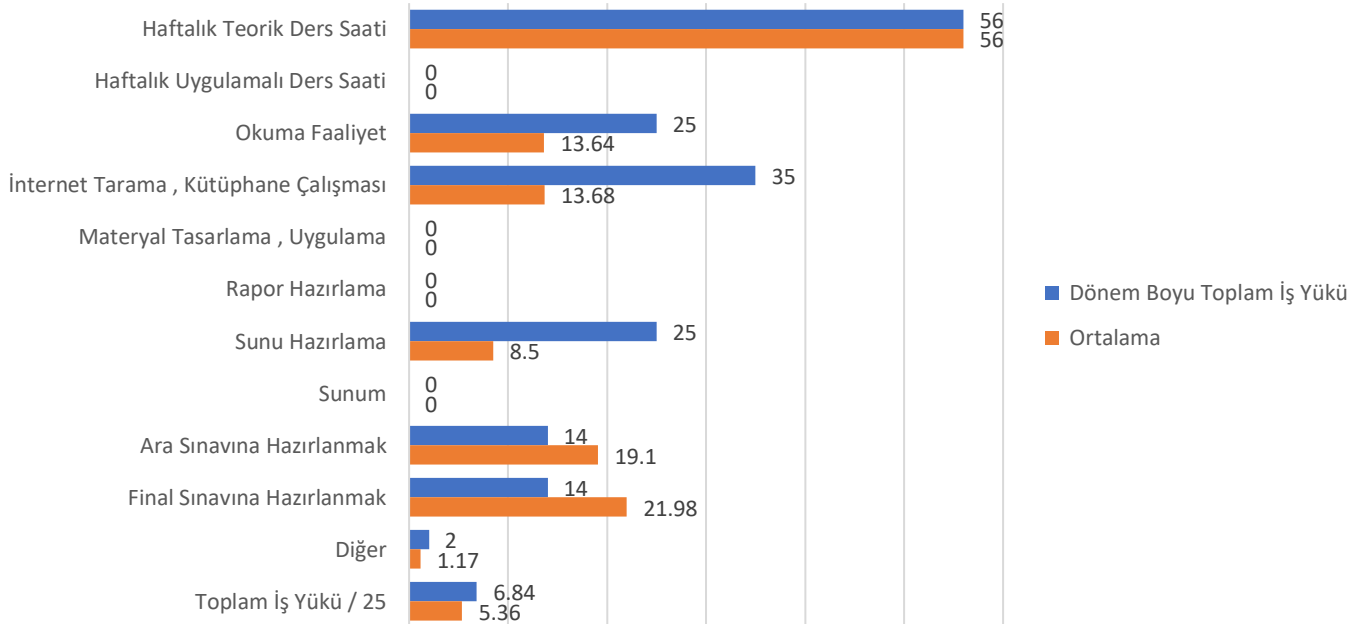
IST3003 – OPTİMİZASYON TEKNİKLERİ I

IST3003 – OPTİMİZASYON TEKNİKLERİ I



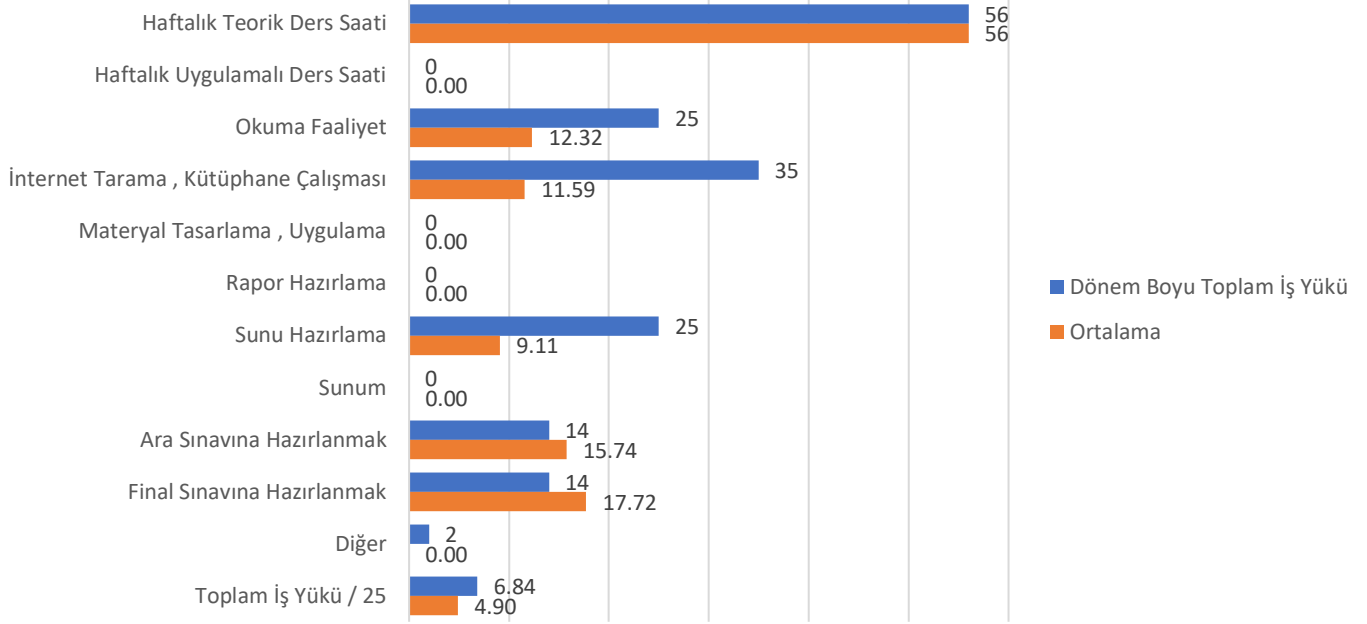
IST3001 – ÖRNEKLEME TEKNİKLERİ I (A)

IST3001 – ÖRNEKLEME TEKNİKLERİ I



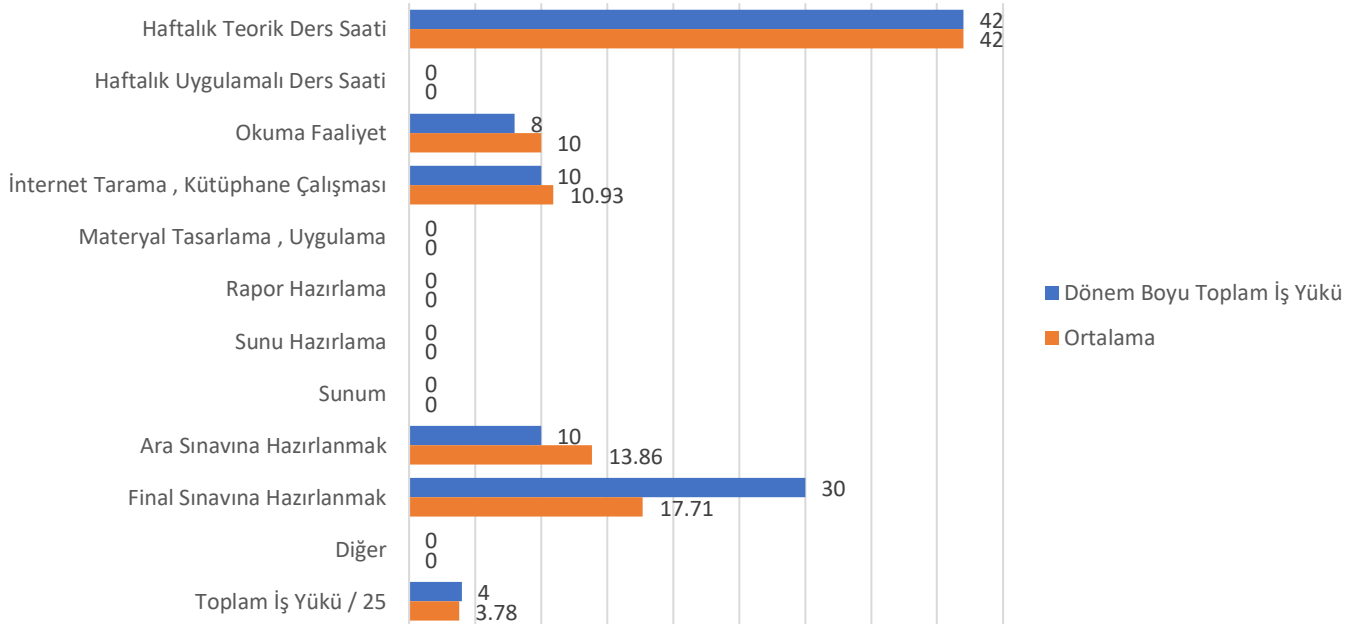
IST3001 – ÖRNEKLEME TEKNİKLERİ I (B)

IST3001 – ÖRNEKLEME TEKNİKLERİ I



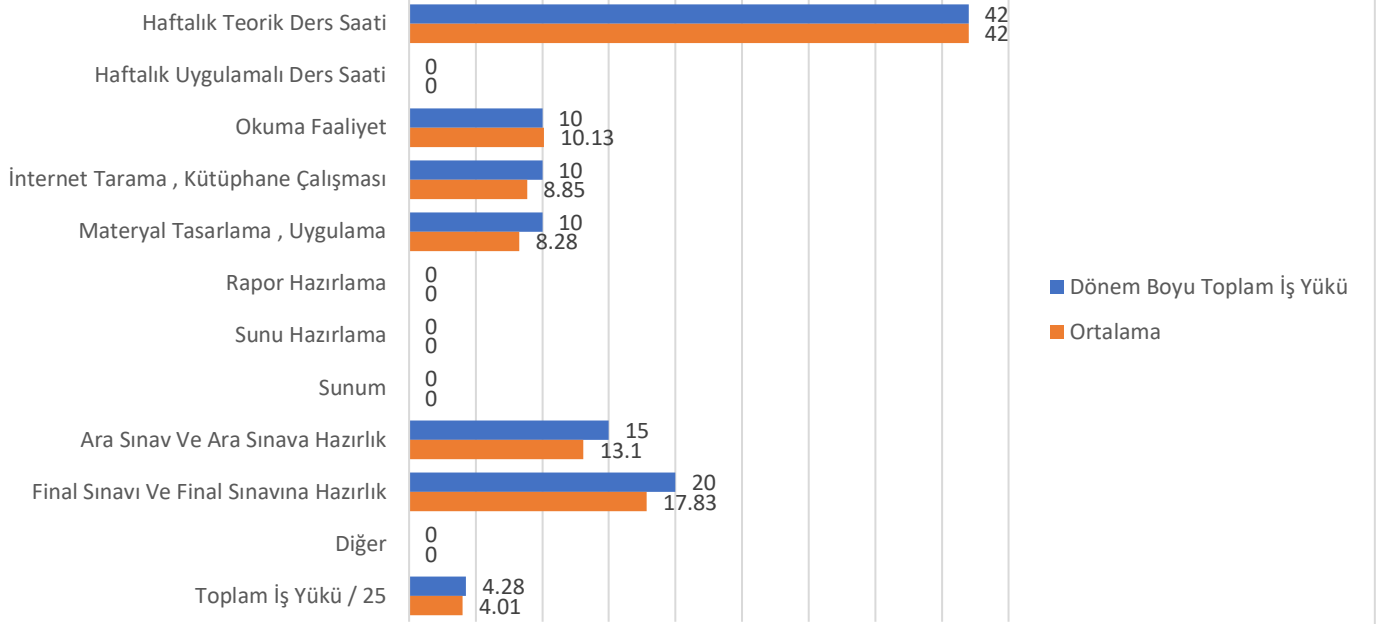
IST3023 – RİSK ÇÖZÜMLEMESİ

IST3023 – RİSK ÇÖZÜMLEMESİ



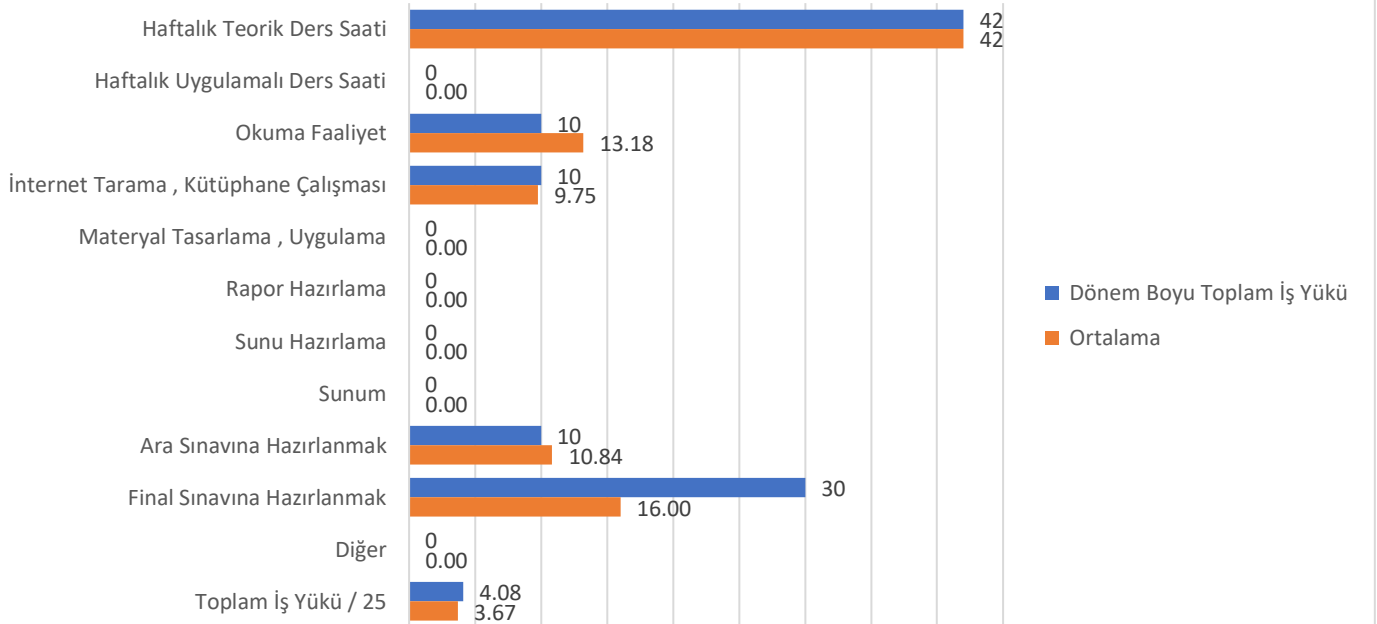
IST302 – VISUAL C

IST302 – VISUAL C



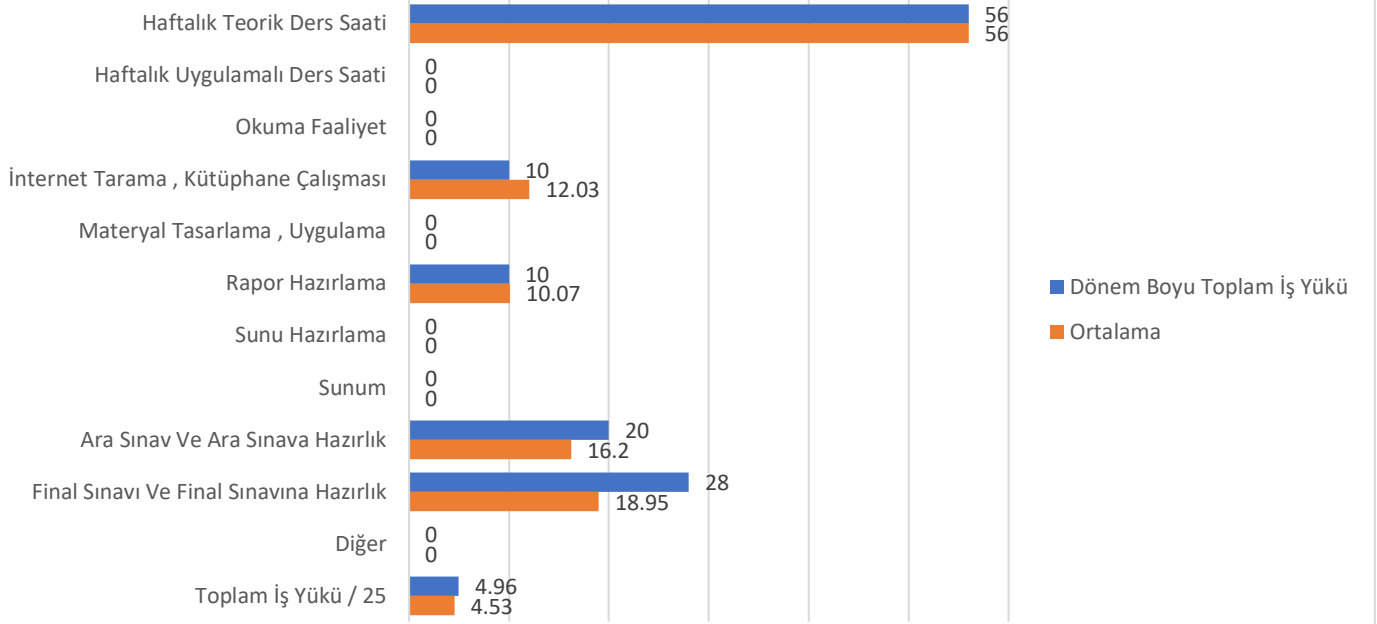
IST3021 – YÖNEYLEM ARAŞTIRMASI II

IST3021 – YÖNEYLEM ARAŞTIRMASI II



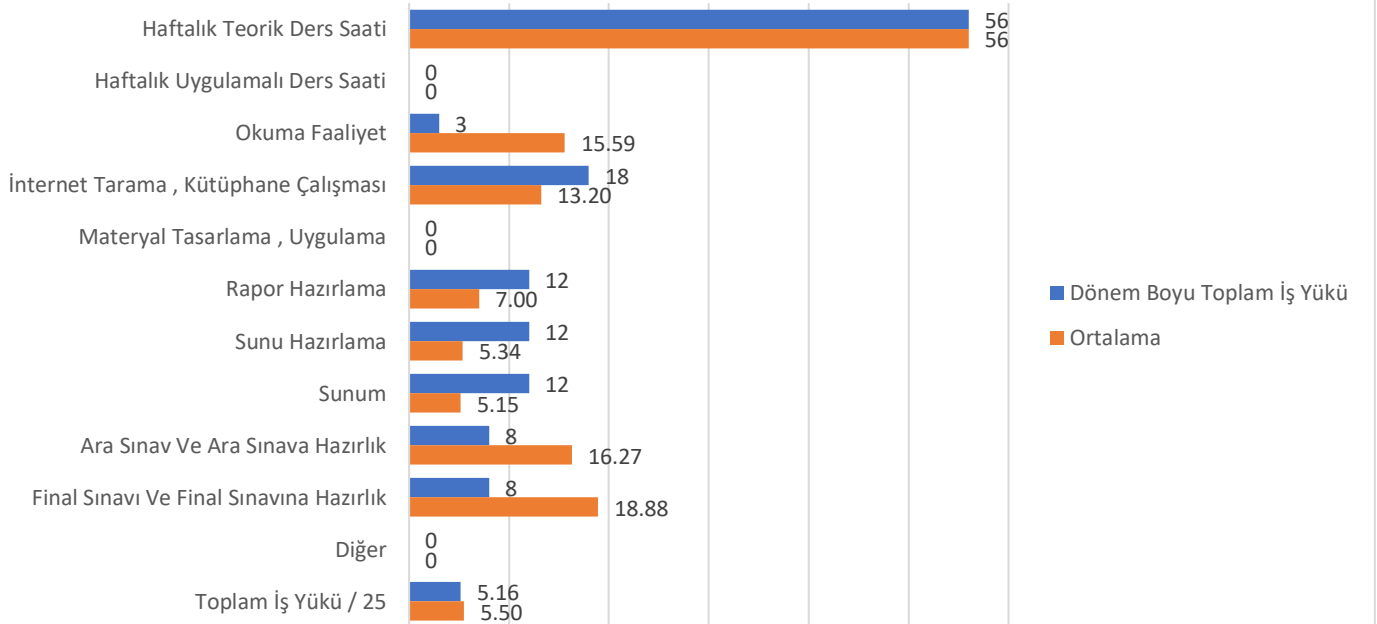
IST4001 – ÇOK DEĞİŞKENLİ İSTATİSTİK I

IST4001 – ÇOK DEĞİŞKENLİ İSTATİSTİK I



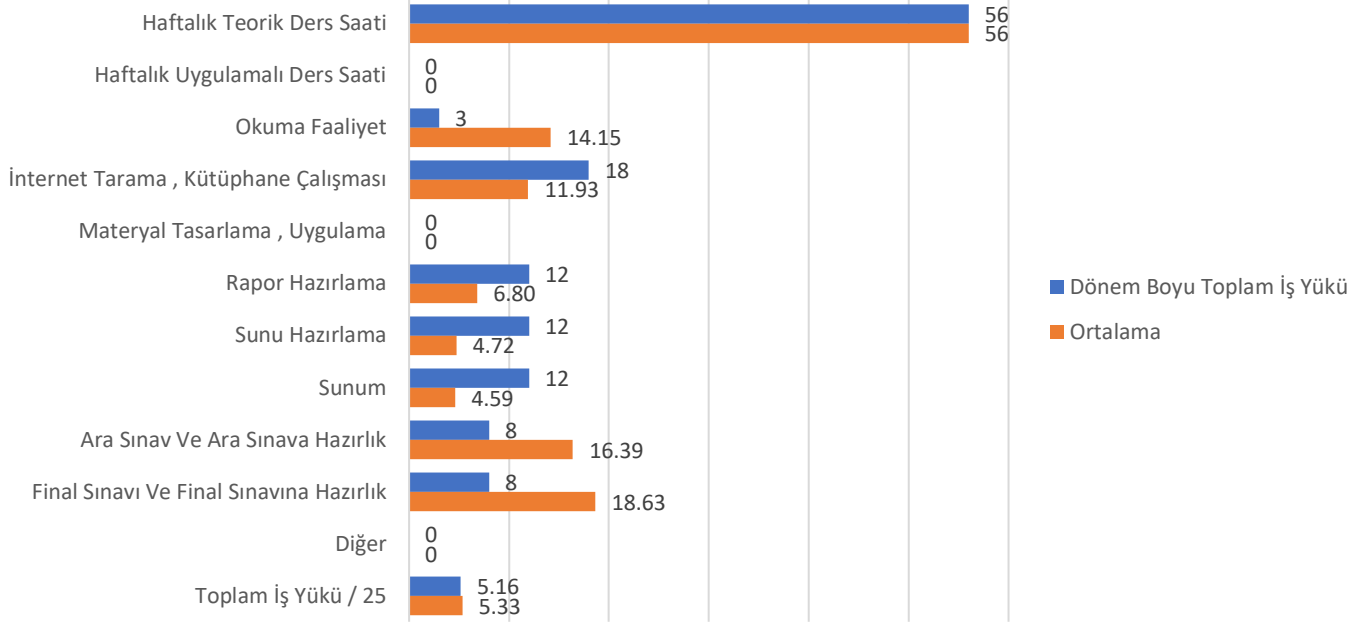
IST4003 – PARAMETRE DIŞI İSTATİSTİK (A)

IST4003 – PARAMETRE DIŞI İSTATİSTİK



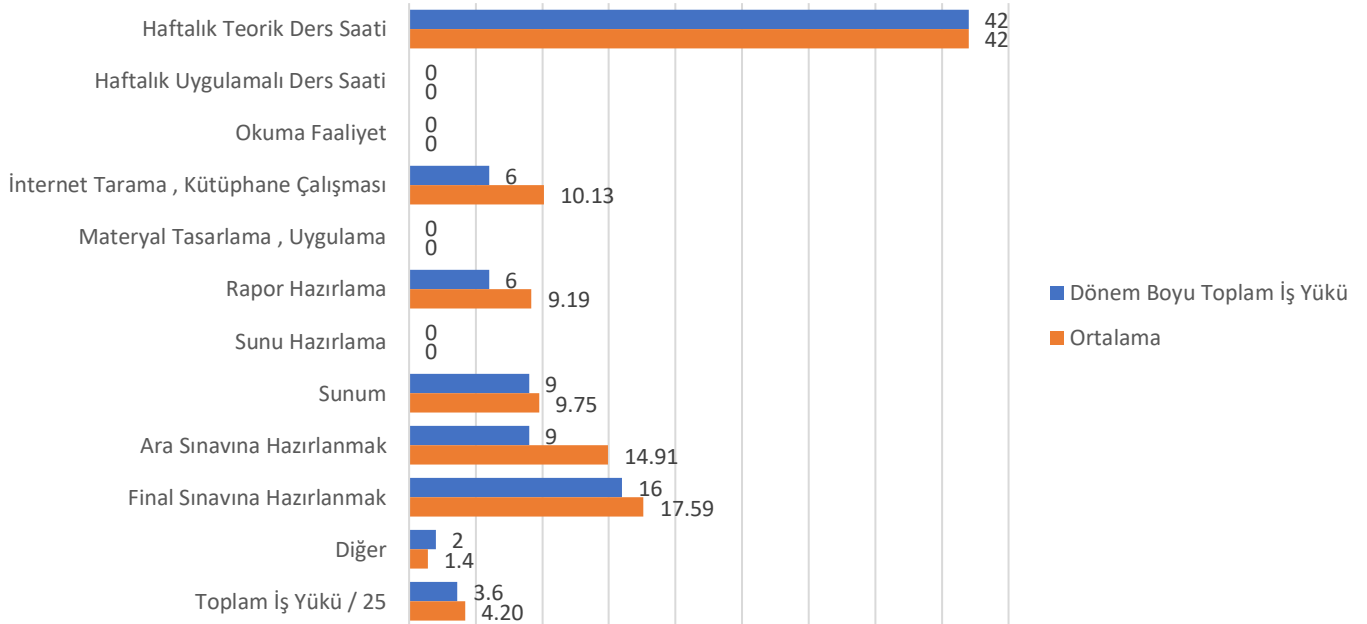
IST4003 – PARAMETRE DIŞI İSTATİSTİK (B)

IST4003 – PARAMETRE DIŐI İSTATİSTİK



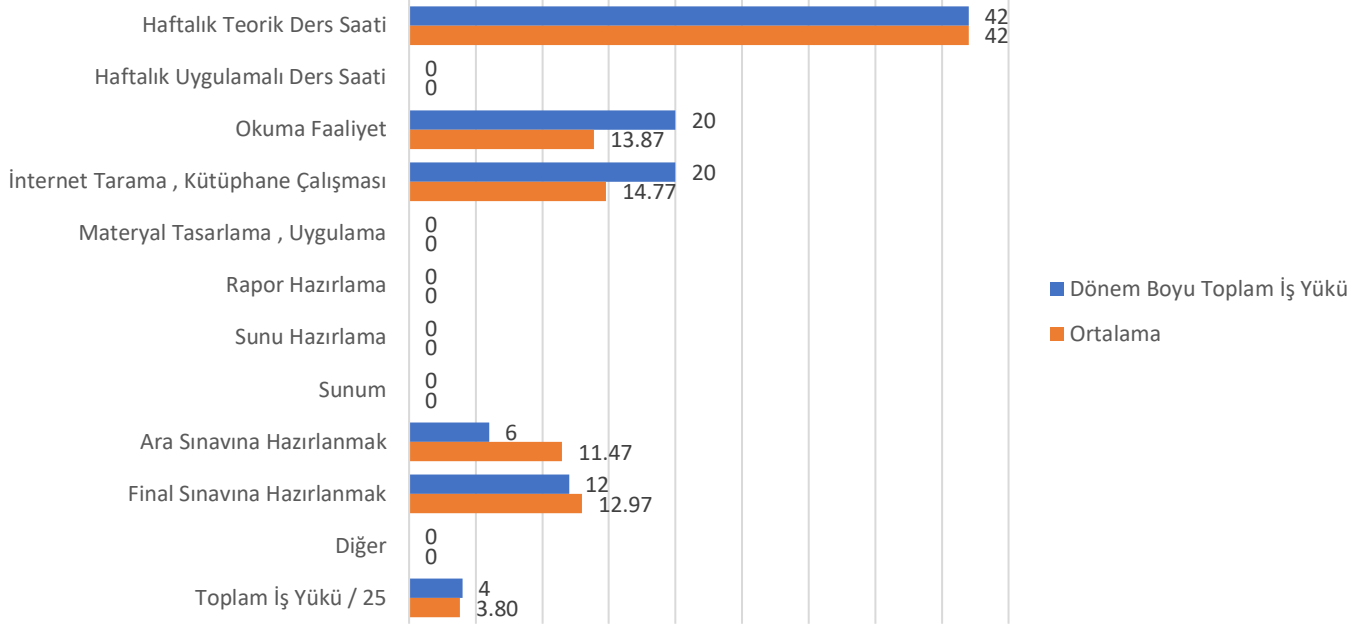
IST4031 – EKONOMETRİK MODELLER

IST4031 – EKONOMETRİK MODELLER



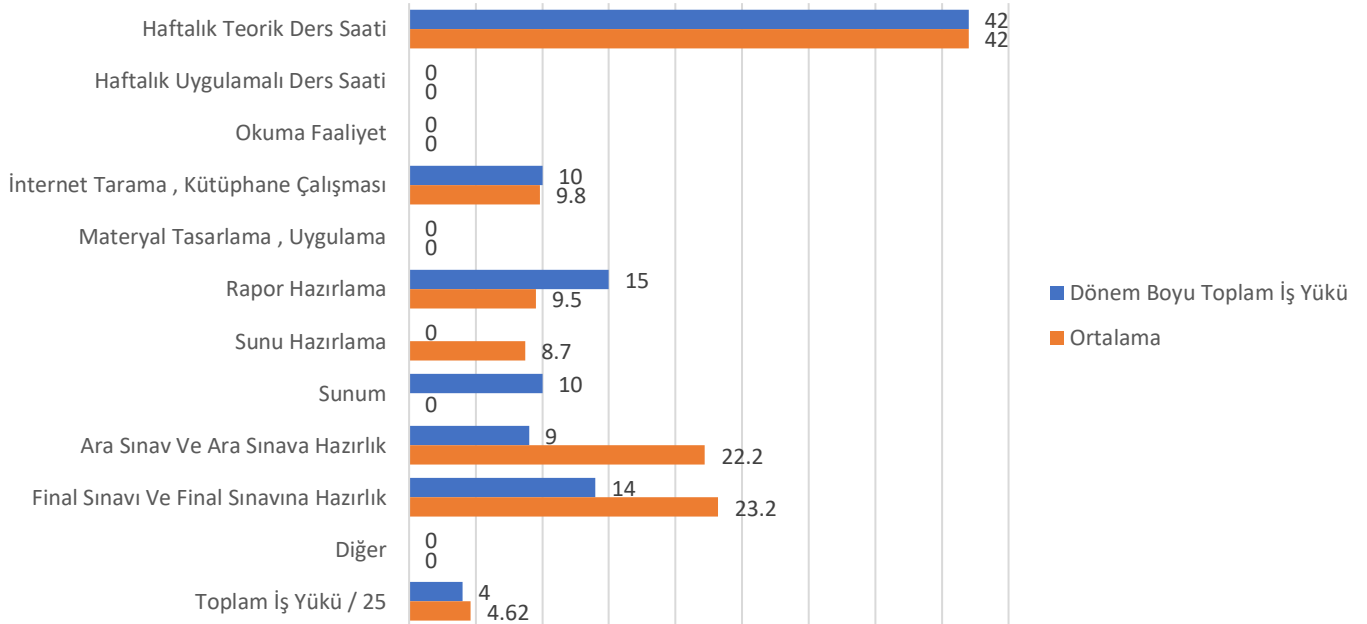
IST4021 – DEMOGRAFİ

IST4021 – DEMOGRAFİ



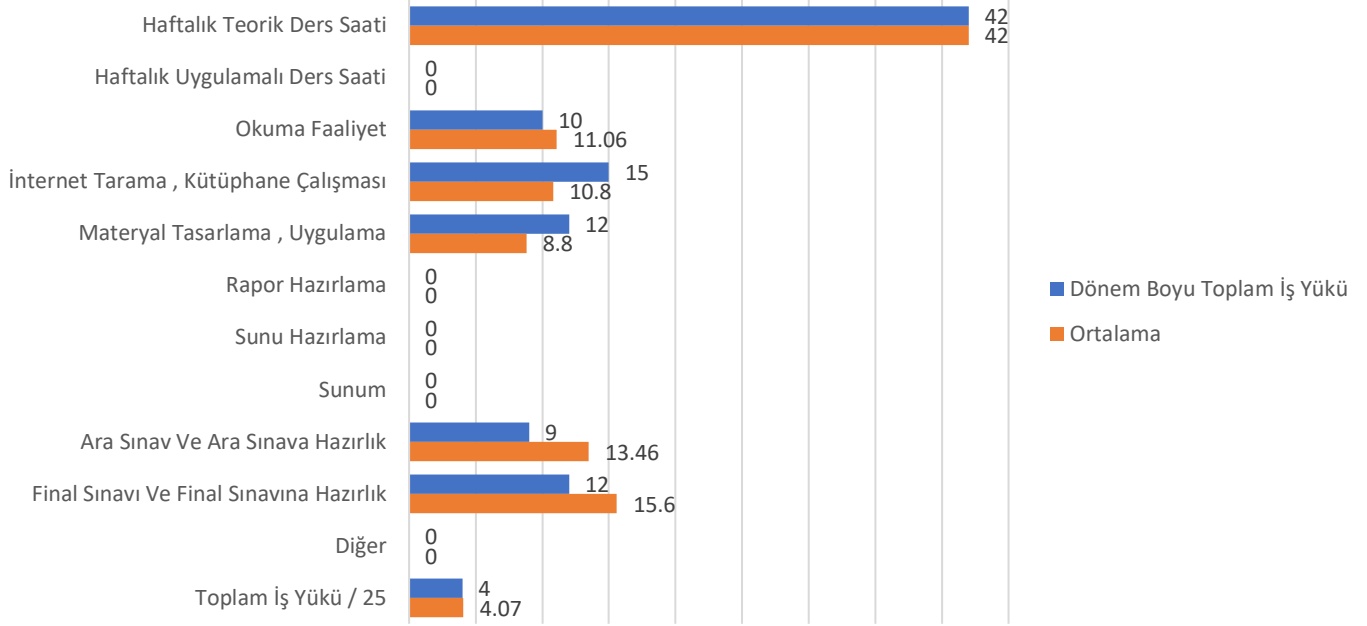
IST4023 – İSTATİSTİKSEL DENEY TASARIMI II

IST4023 – İSTATİSTİKSEL DENEY TASARIMI II



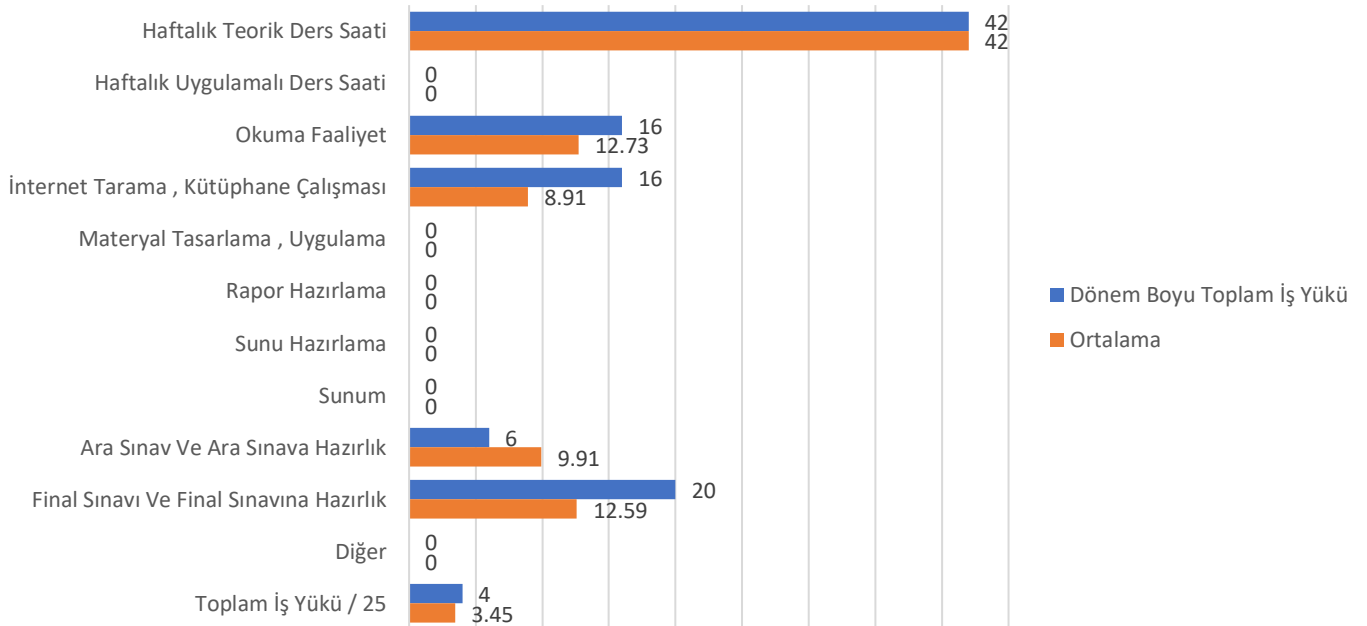
IST4021 – VERİ MADENCİLİĞİ

IST4021 – VERİ MADENCİLİĞİ



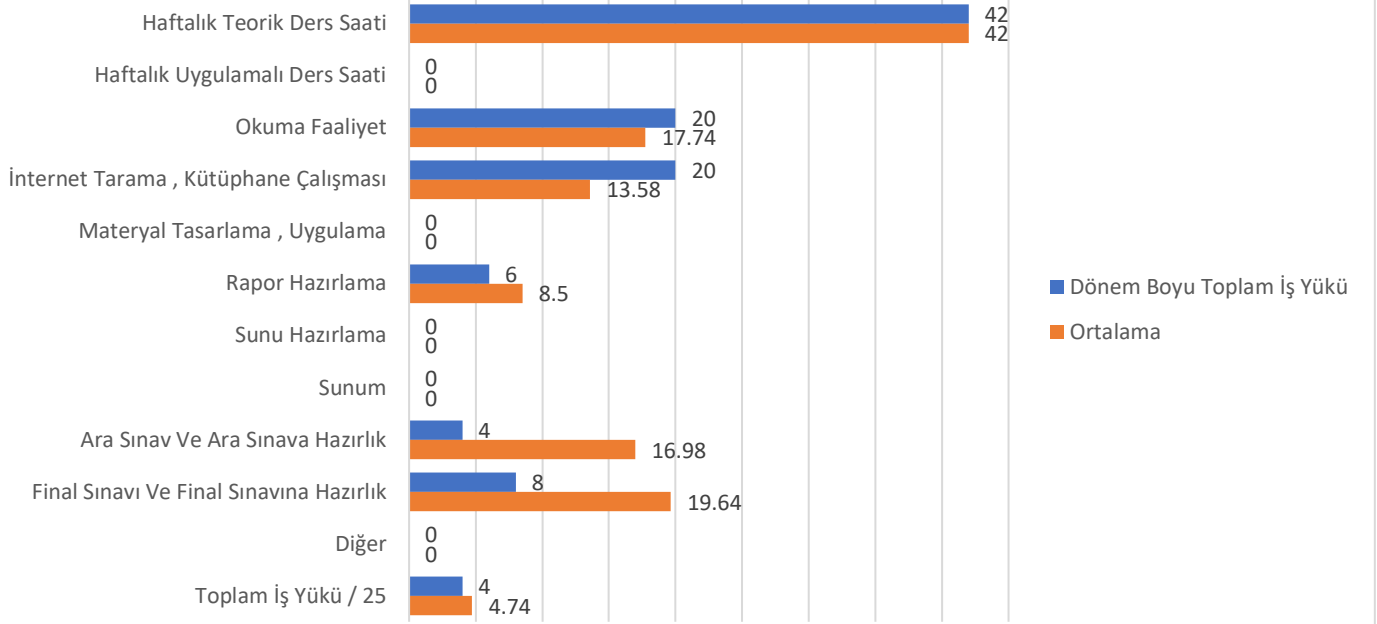
IST4027 – İSTATİSTİKSEL YAZILIM II

IST4027 – İSTATİSTİKSEL YAZILIM II



IST4025 – KATEGORİK VERİ ÇÖZÜMLEMESİ

IST4025 – KATEGORİK VERİ ÇÖZÜMLEMESİ



IST4029 – İSTATİSTİKSEL KALİTE KONTROL

IST4029 – İSTATİSTİKSEL KALİTE KONTROL

