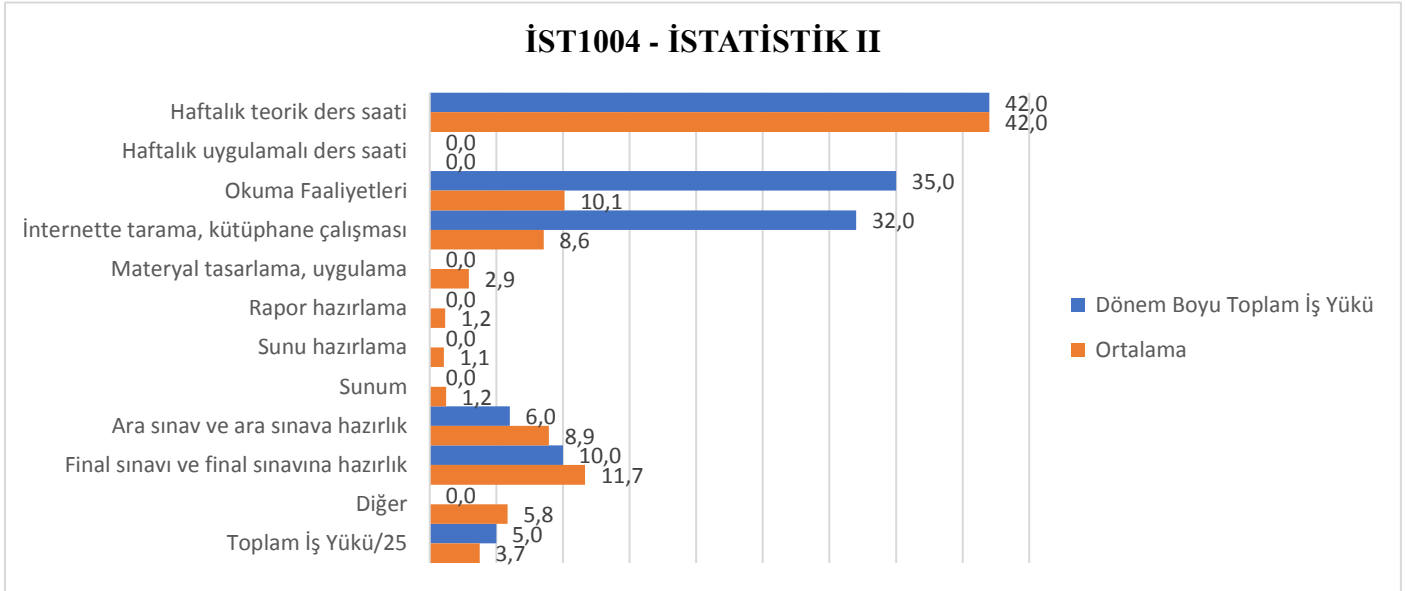


DERS İŞ YÜKÜ ANKETLERİ GRAFİKLERİ VE RAPOR

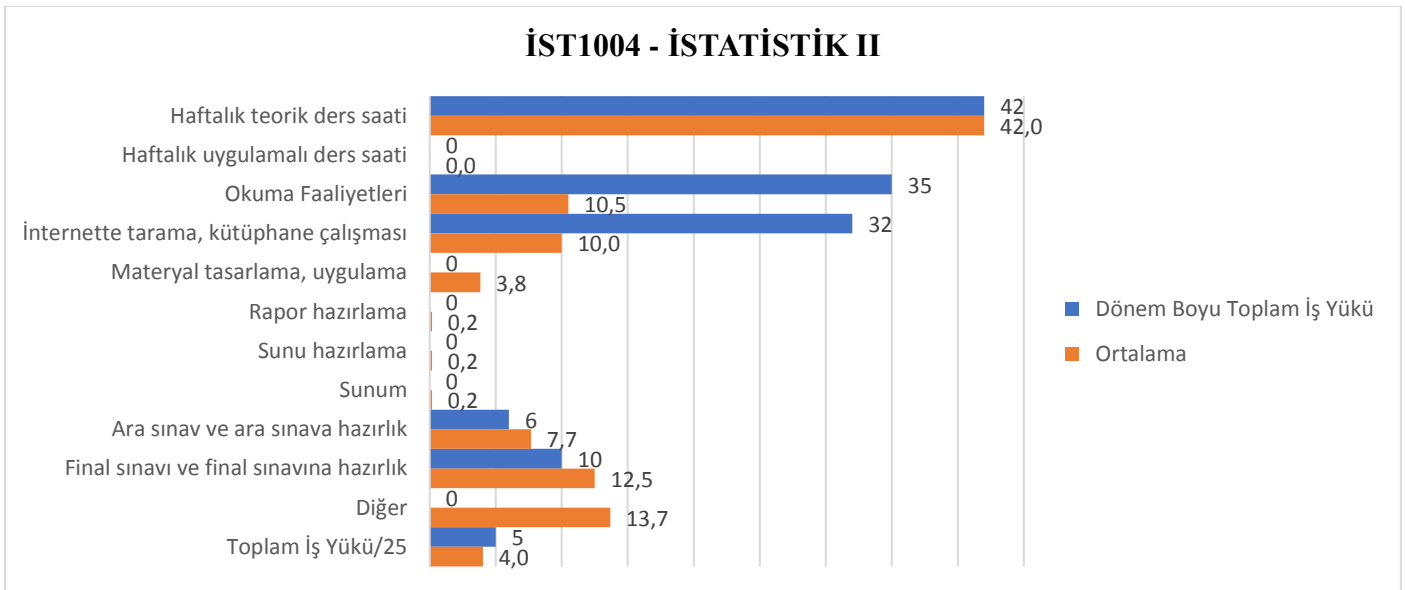
İstatistik bölümünde yürütülen 2020-2021 bahar dönemi dersleri için oluşturulmuş ders iş yükü anketine göre elde edilen sonuçlara yönelik grafikler aşağıda verilmiştir. Buna göre;

- ✓ Birinci ve ikinci sınıf öğrencileri pandemiden dolayı yüz yüze eğitim göremediklerinden birçok dersin teorik iş yükleri ile öğrencinin değerlendirdiği iş yükleri arasında farklılıklar görülmüştür.
- ✓ Üçüncü ve dördüncü sınıf öğrencilerinin ders iş yükü anketleri incelendiğinde, genel olarak dersin teorik iş yükleri ile öğrencinin değerlendirdiği iş yükleri arasında bir uyum olduğu gözlenmiştir.

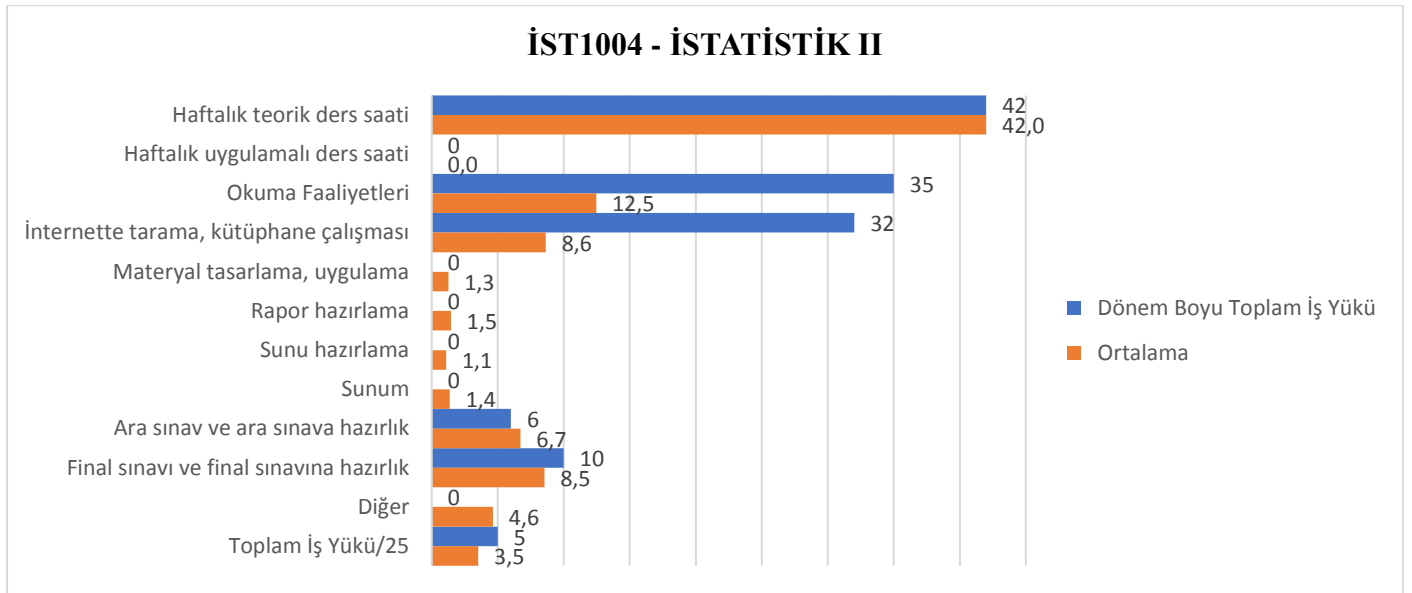
İST1004 – İSTATİSTİK II (A)



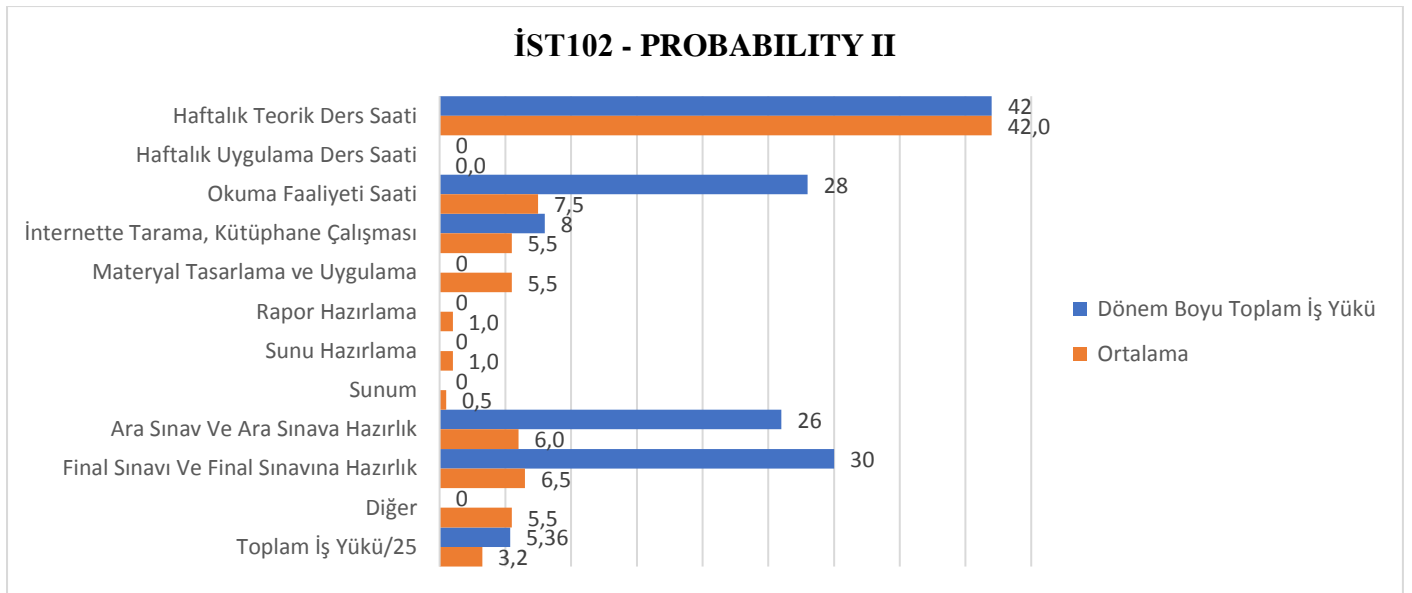
İST1004 – İSTATİSTİK II (B)



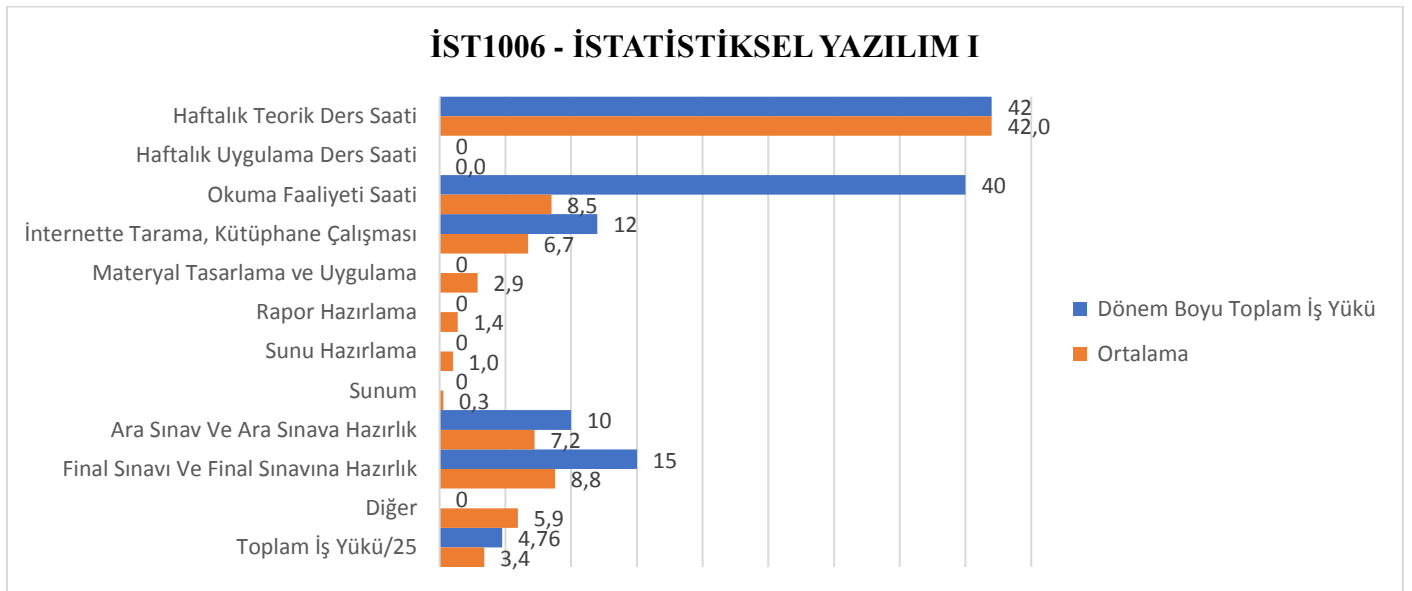
İST1004 – İSTATİSTİK II (C)



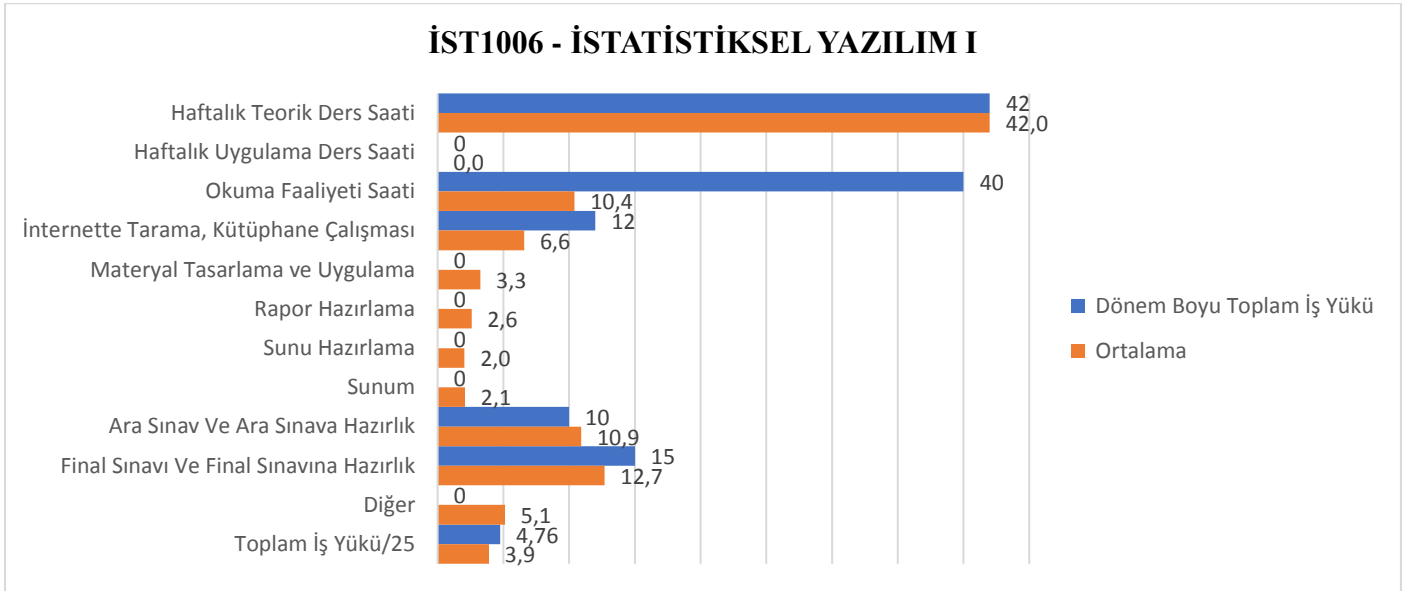
İST102 – PROBABILITY II



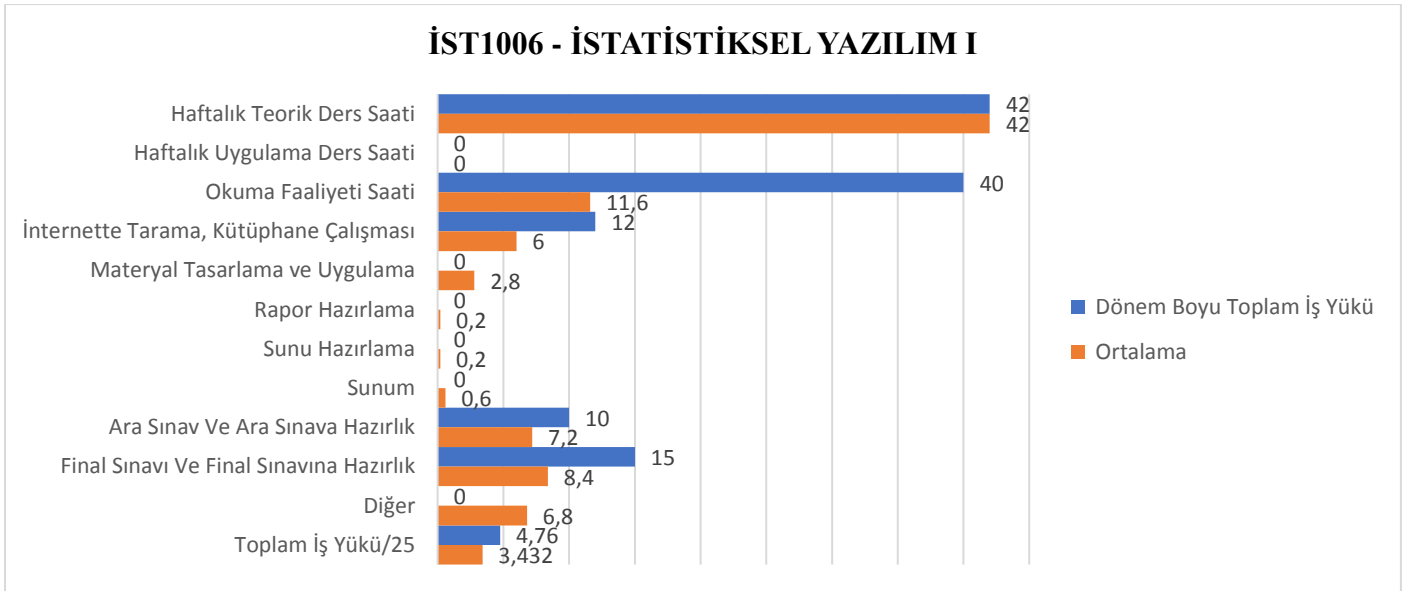
İST1006 – İSTATİSTİKSEL YAZILIM I (A)



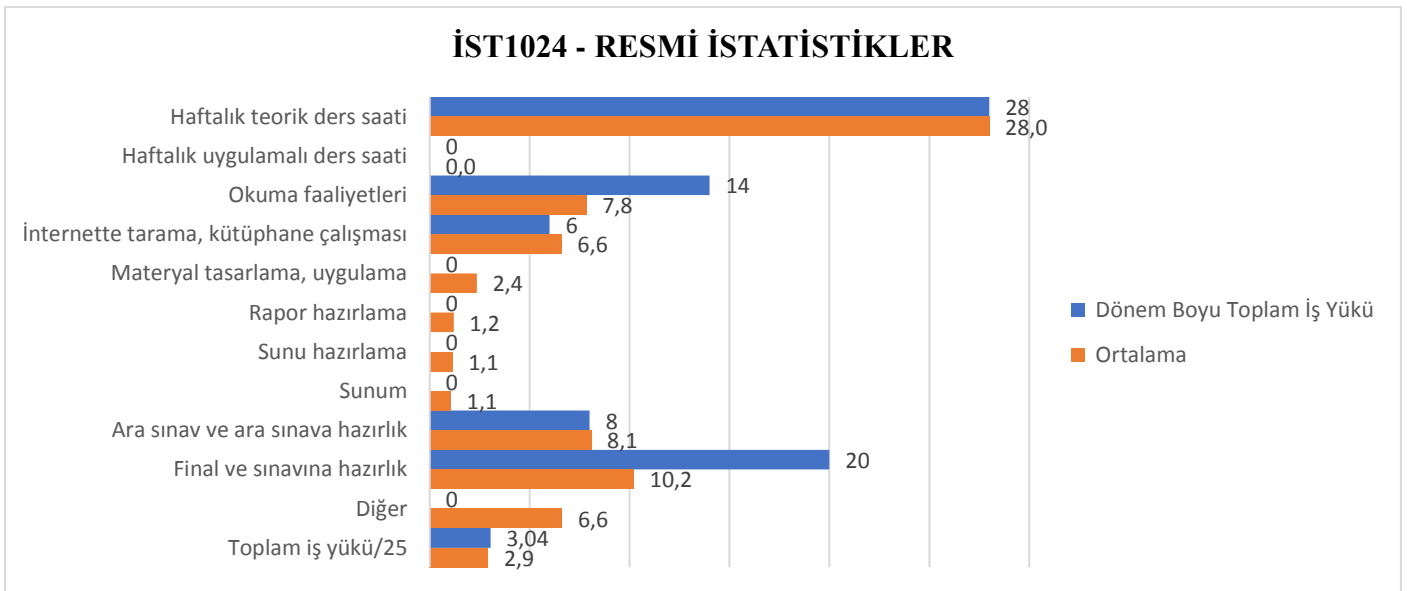
İST1006 – İSTATİSTİKSEL YAZILIM I (B)



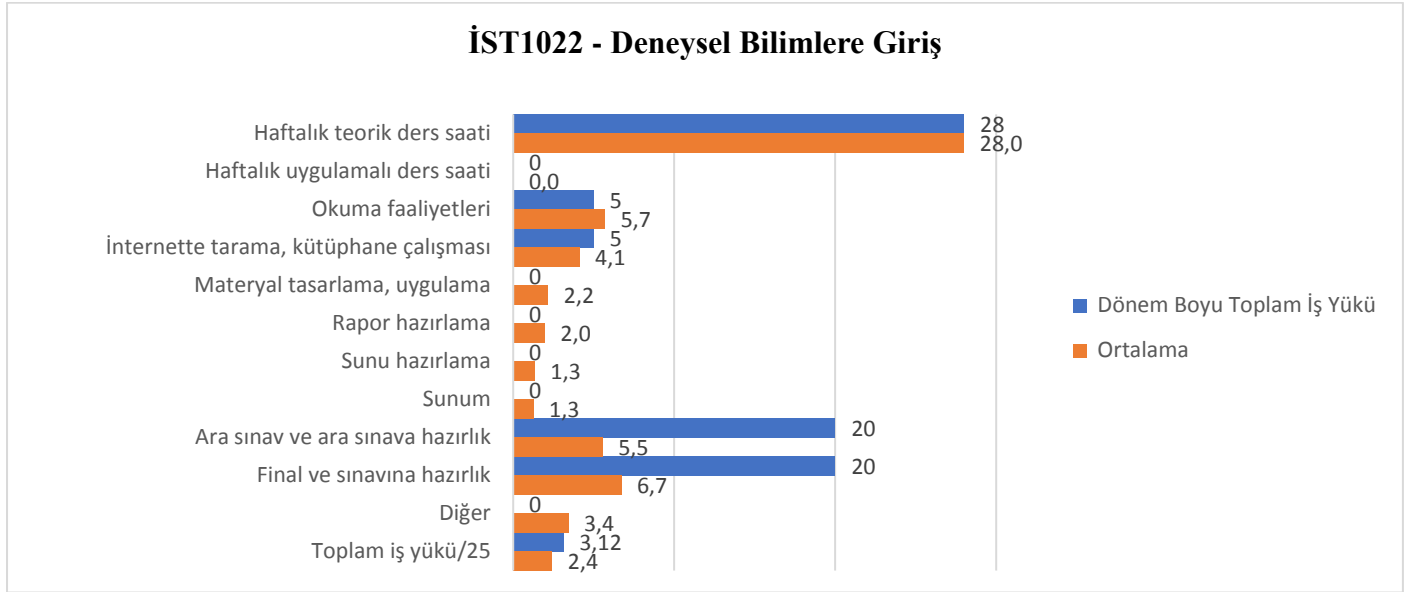
İST1006 – İSTATİSTİKSEL YAZILIM I (C)



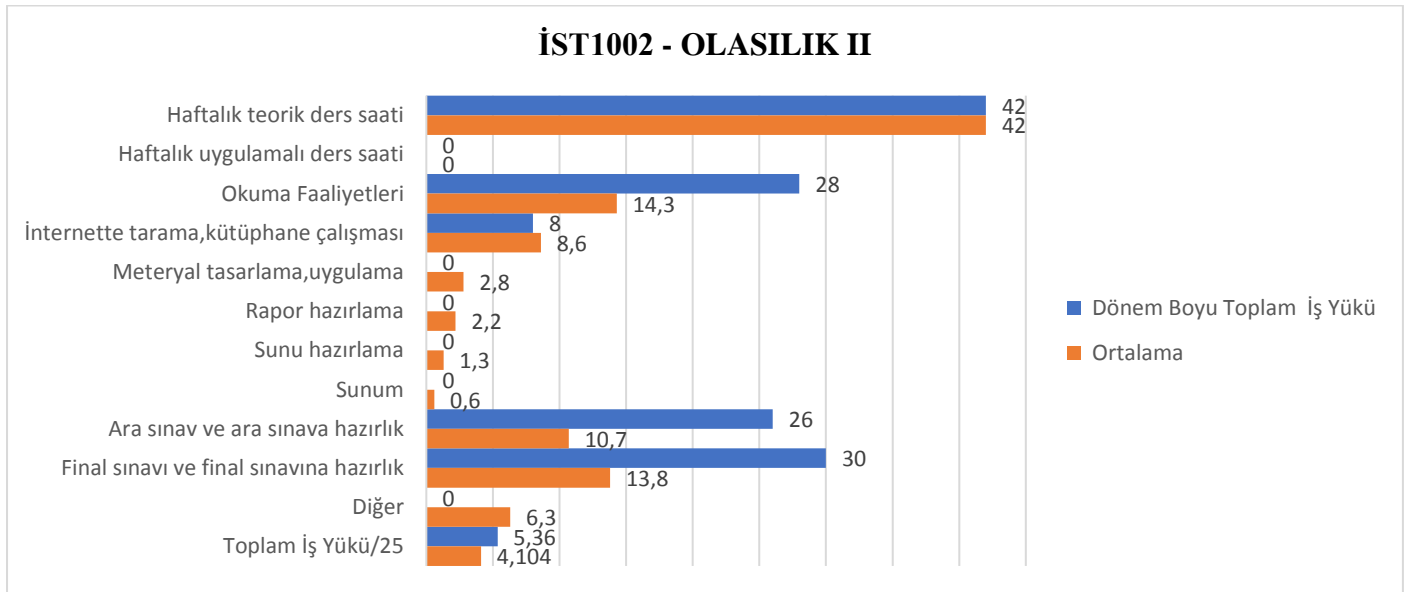
İST1024 – RESMİ İSTATİSTİKLER



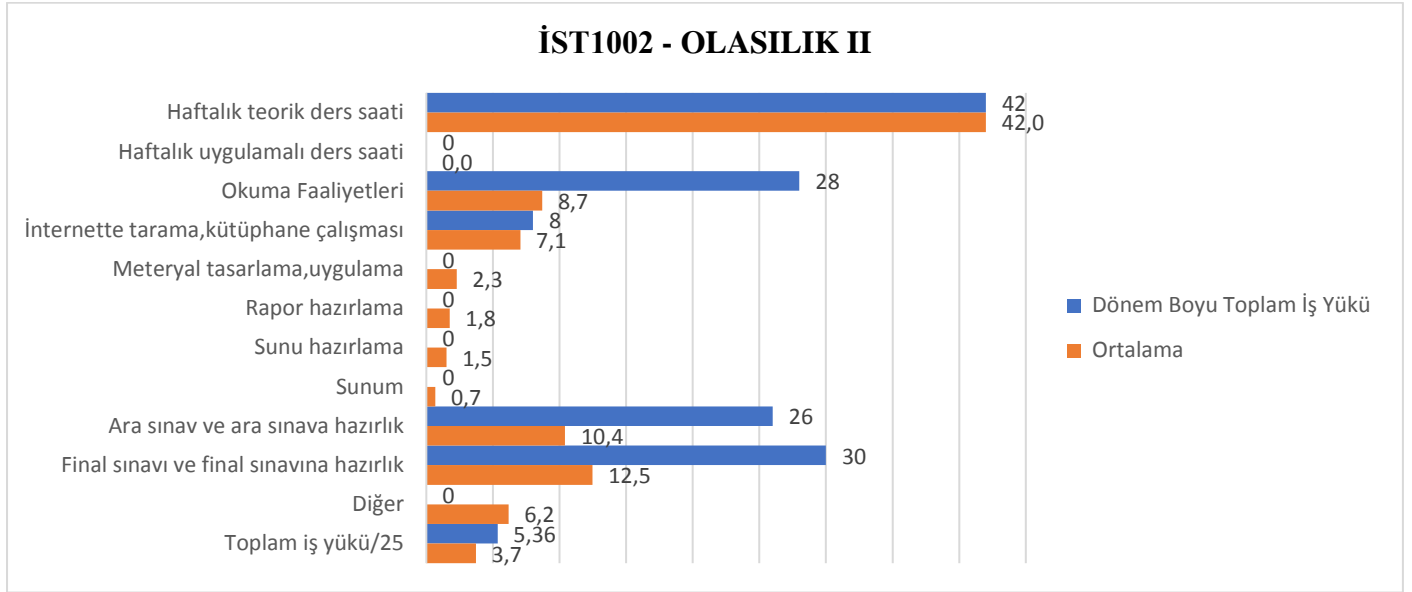
İST1022 – DENEYSEL BİLİMLERE GİRİŞ



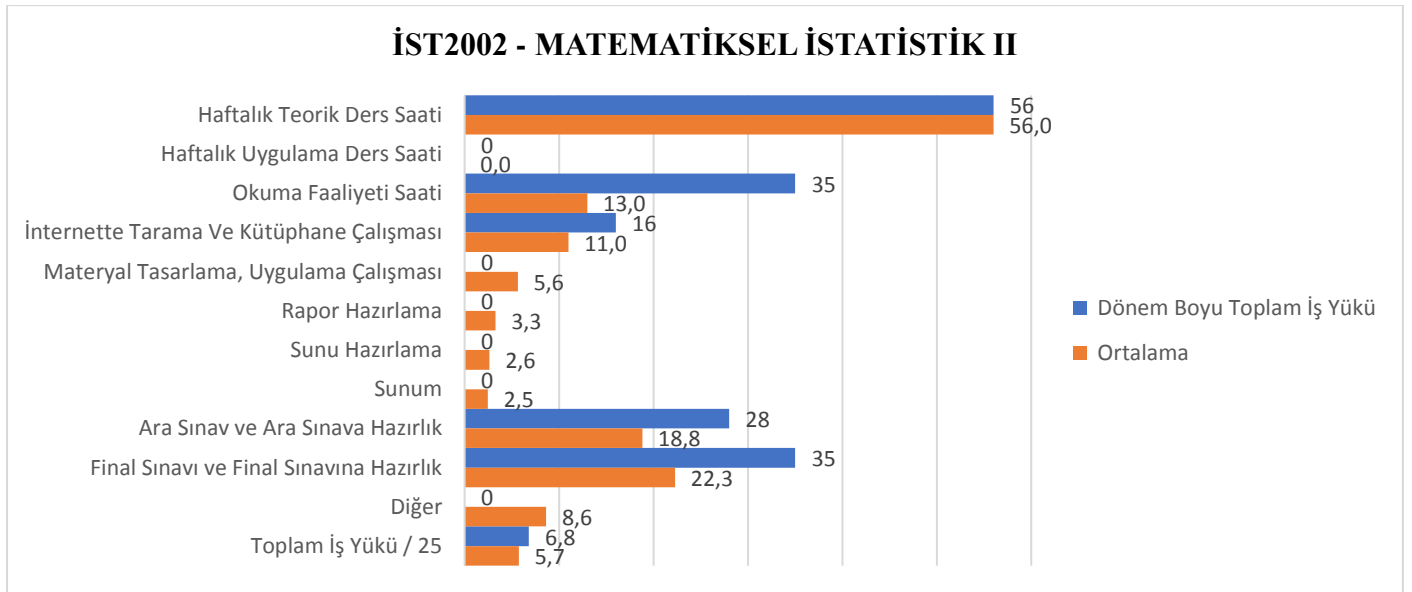
İST1002 – OLASILIK II (A)



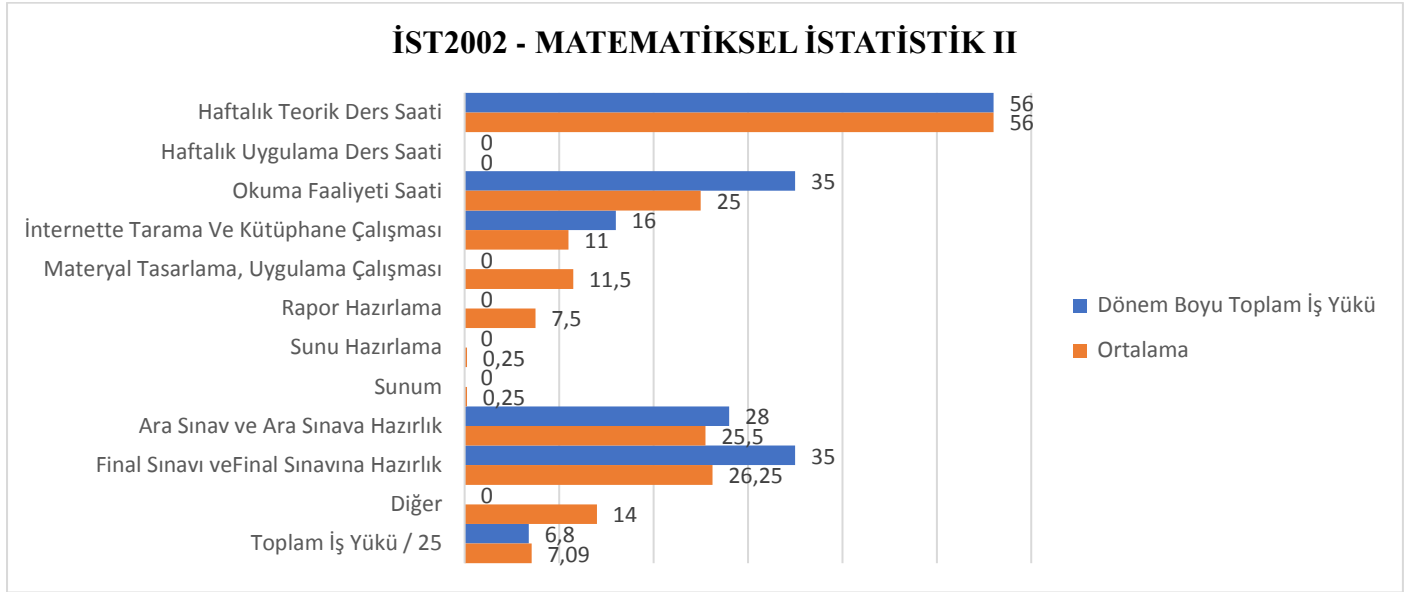
İST1002 – OLASILIK II (B)



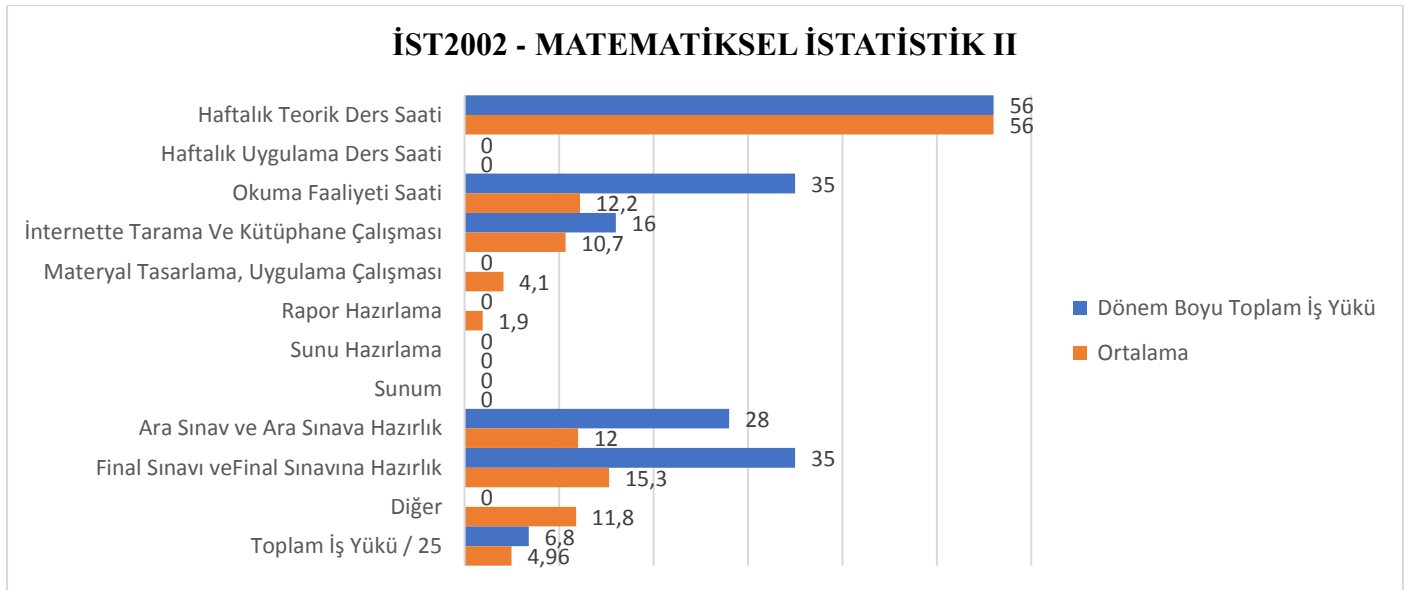
İST2002 – MATEMATİKSEL İSTATİSTİK II (A)



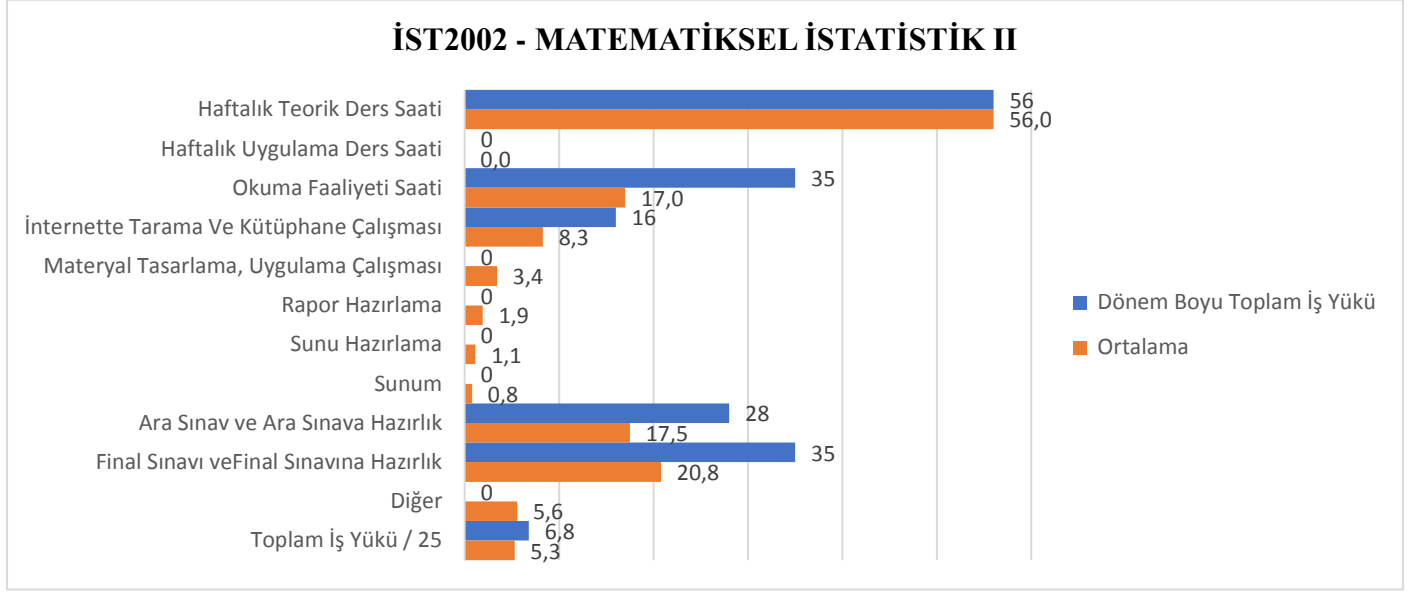
İST2002 – MATEMATİKSEL İSTATİSTİK II (B)



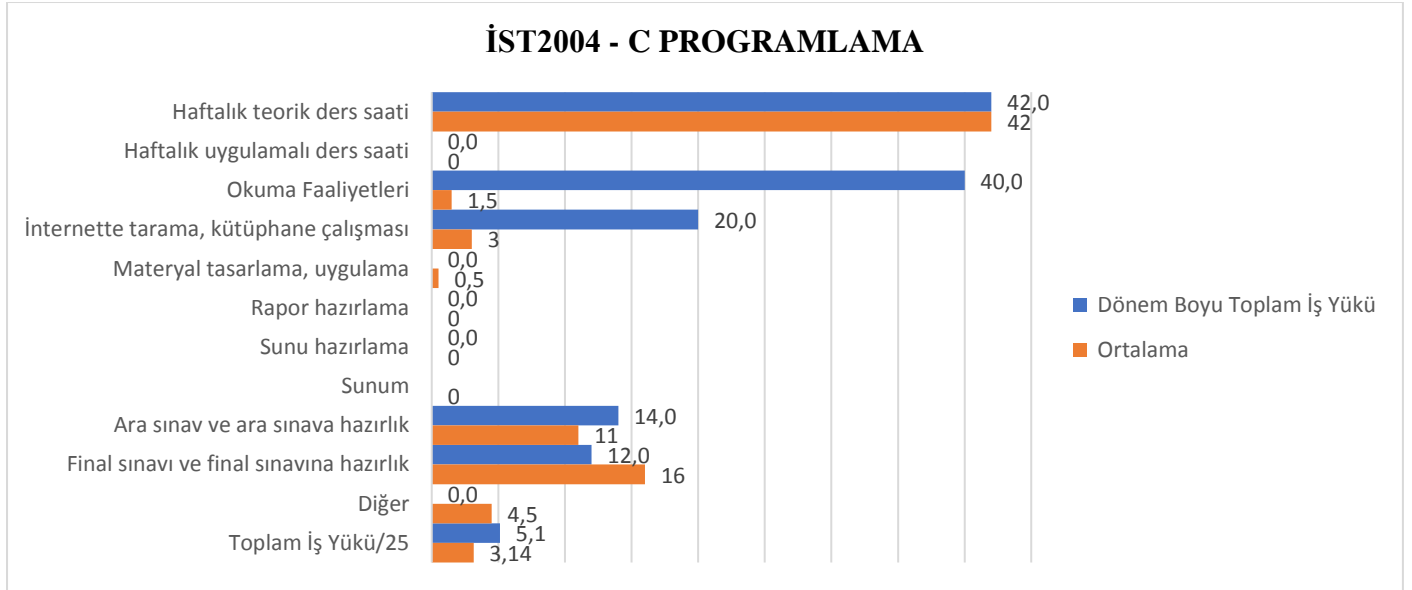
İST2002 – MATEMATİKSEL İSTATİSTİK II (C)



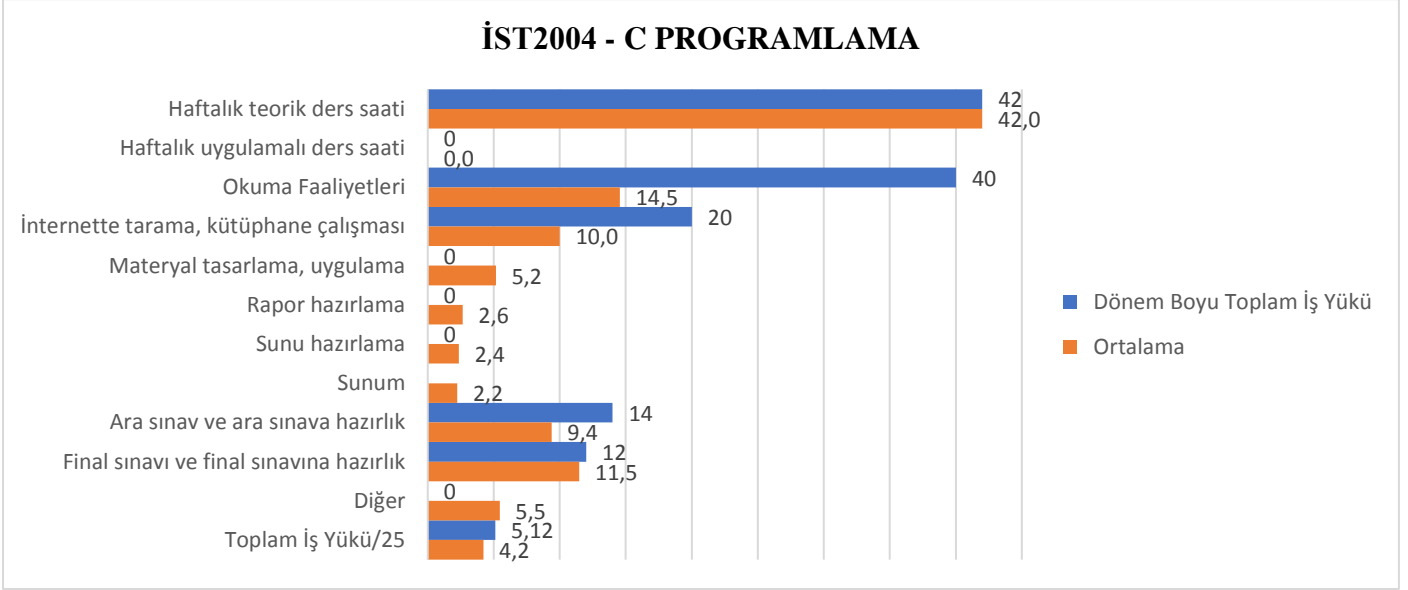
İST2002 – MATEMATİKSEL İSTATİSTİK II (D)



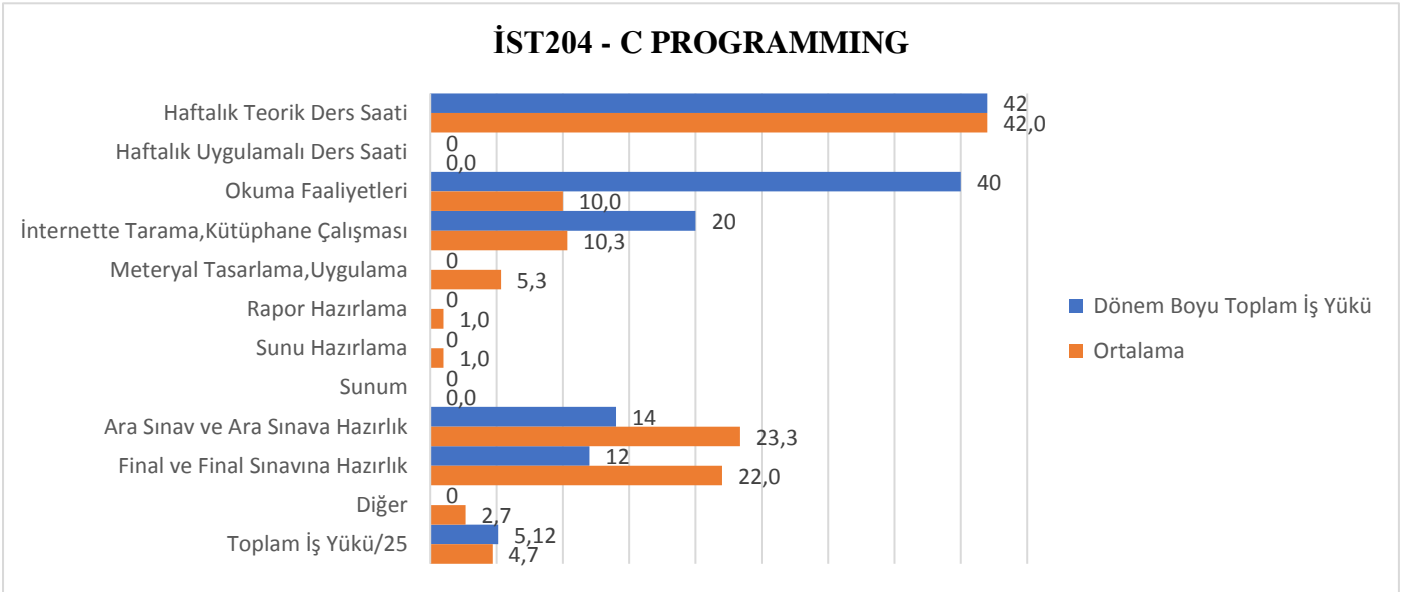
İST2004 – C PROGRAMLAMA (A)



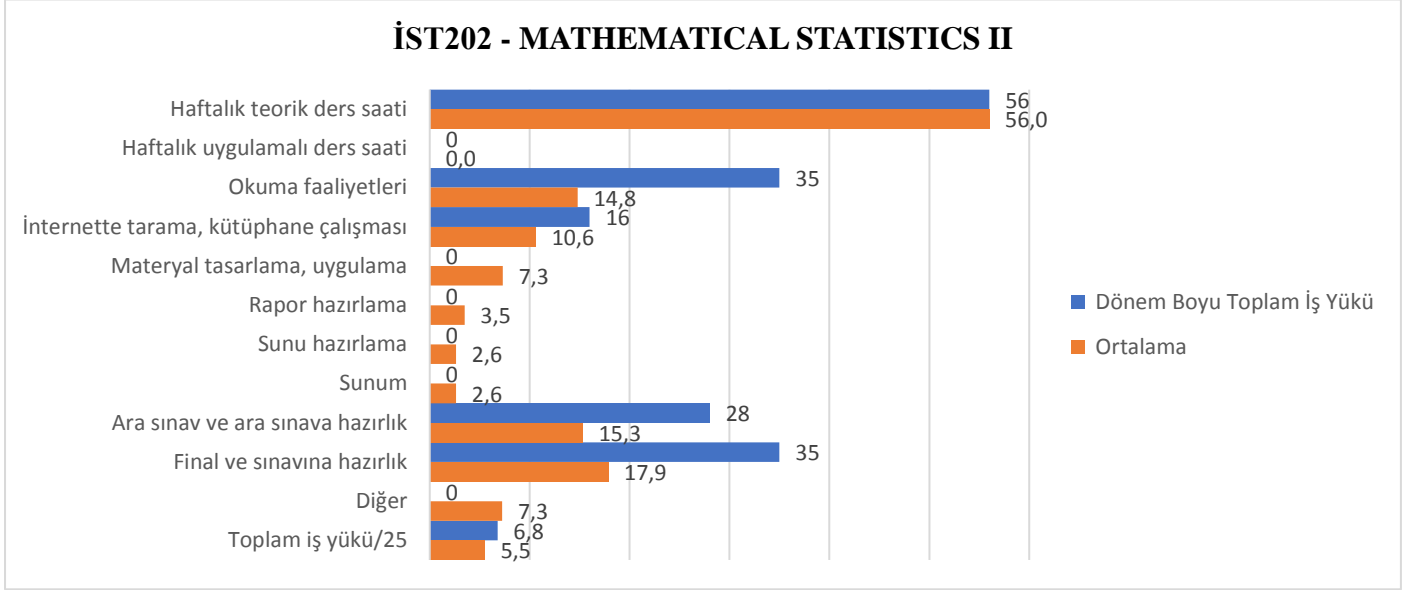
İST2004 – C PROGRAMLAMA (B)



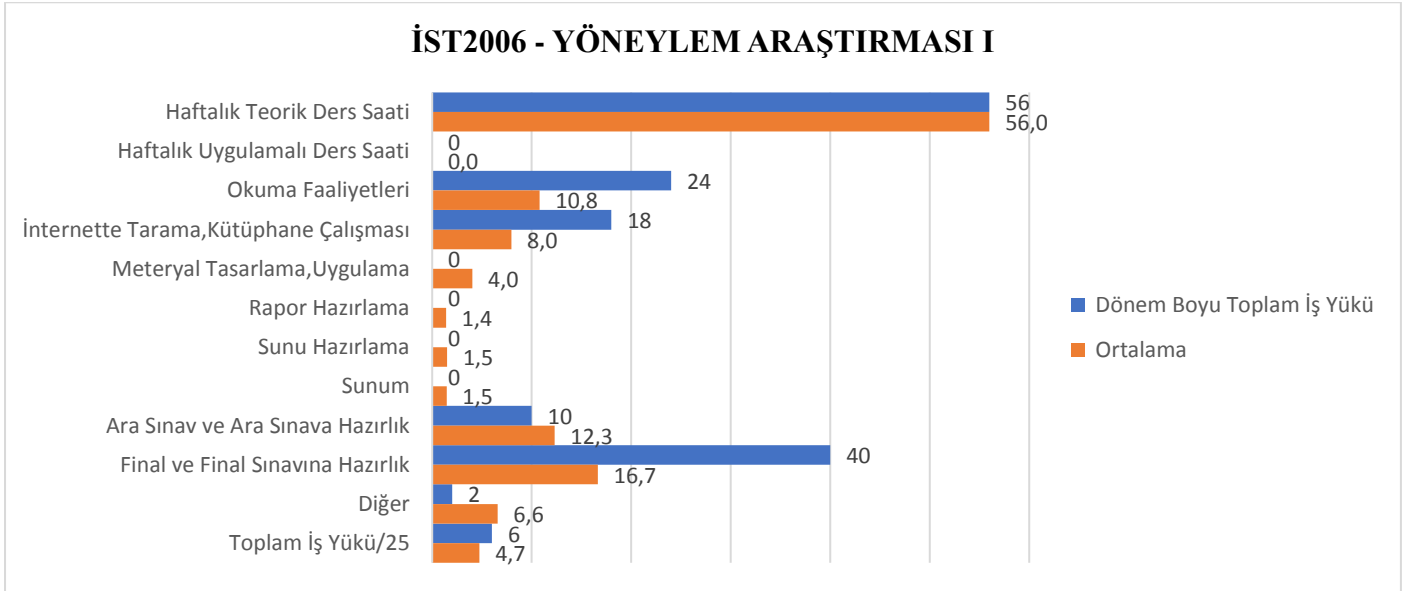
İST204 – C PROGRAMMING



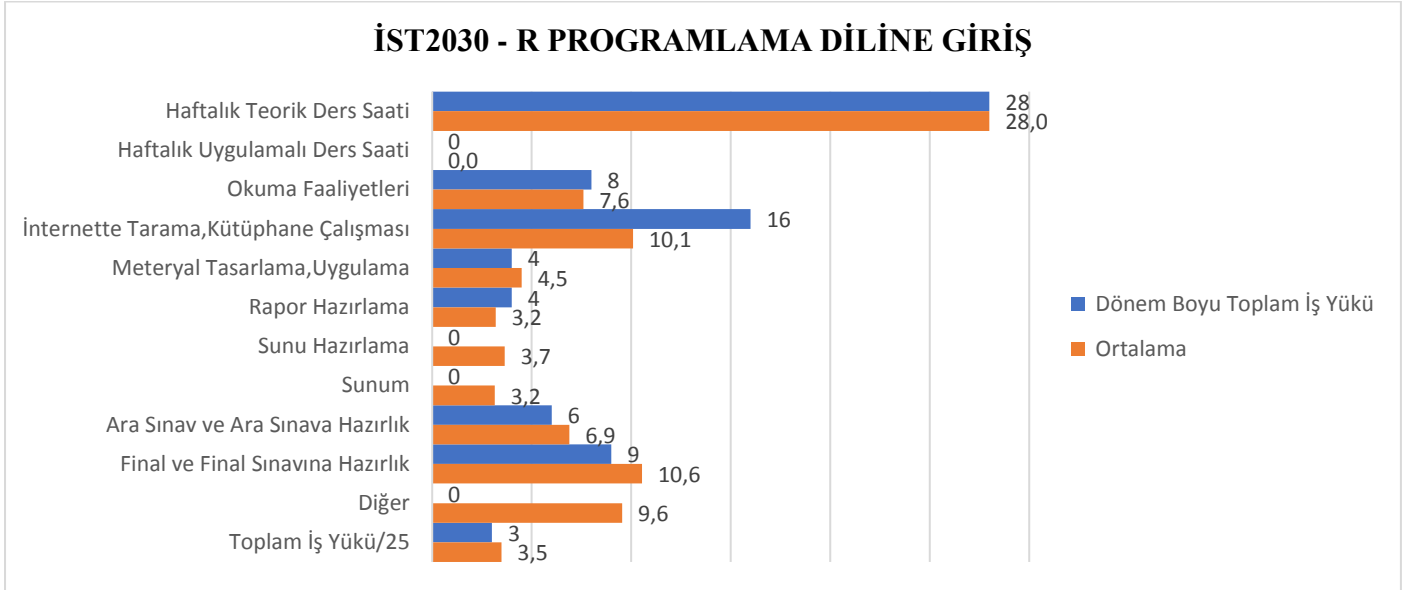
İST202 – MATHEMATICAL STATISTICS II



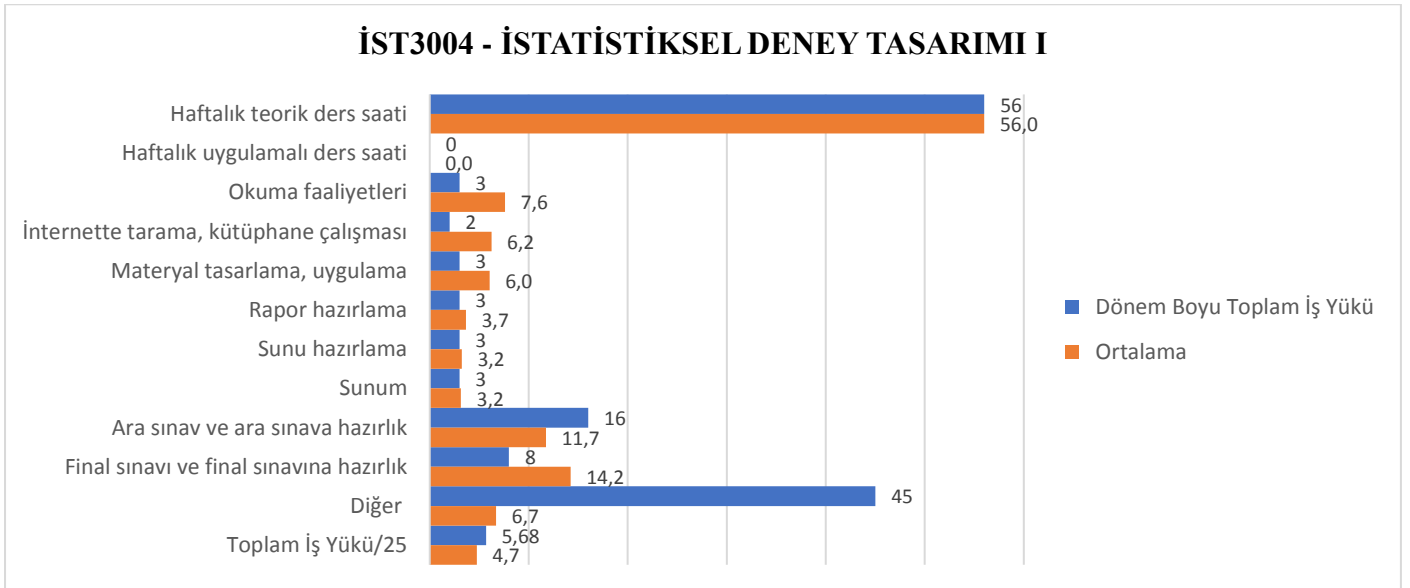
İST2006 – YÖNEYLEM ARAŞTIRMASI I



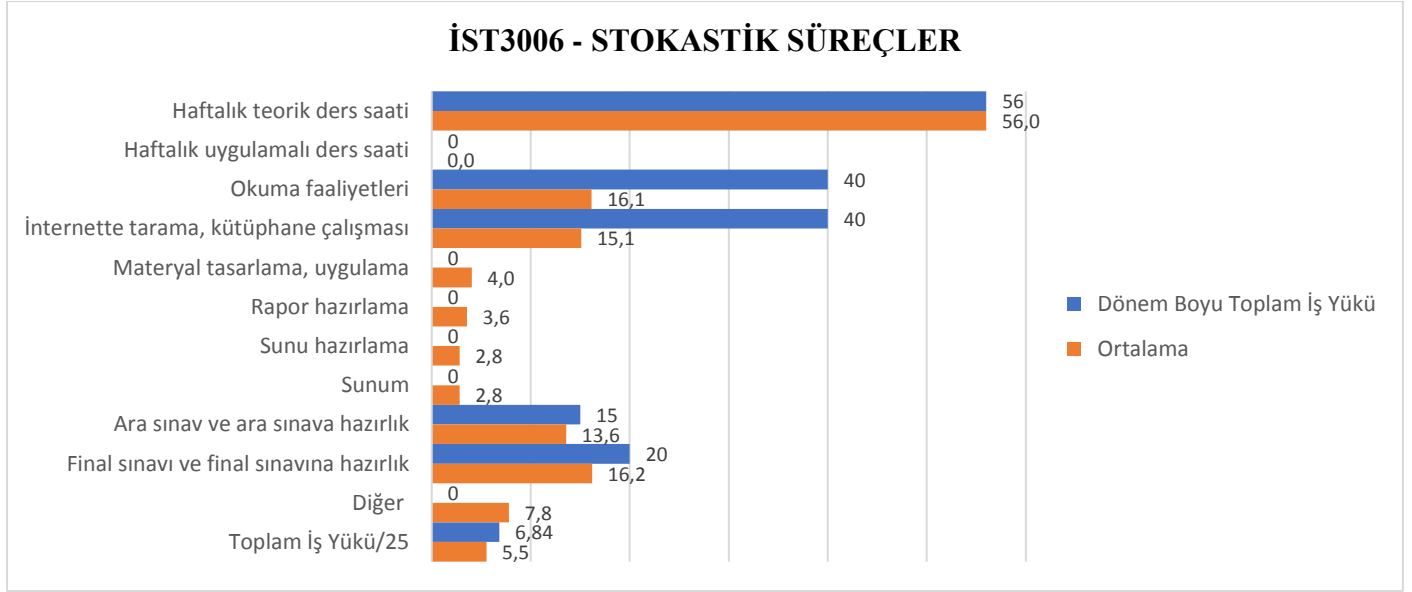
İST2030 – R PROGRAMLAMA DİLİNE GİRİŞ



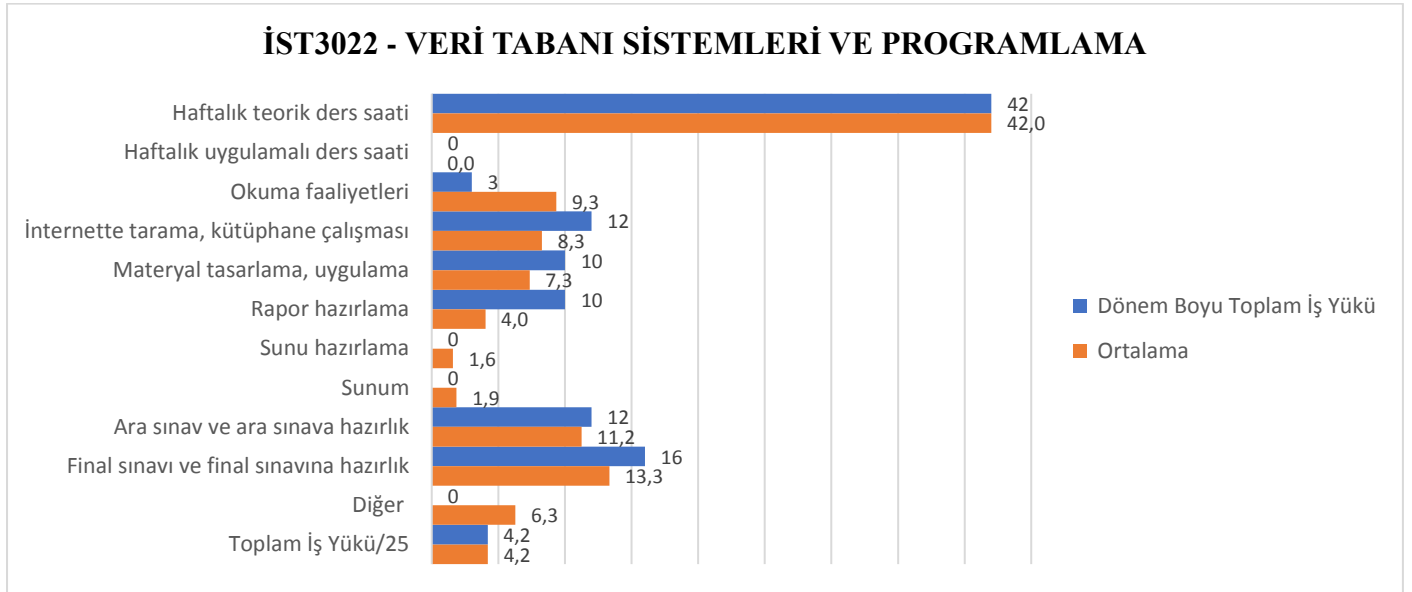
İST3004 – İSTATİSTİKSEL DENEY TASARIMI I



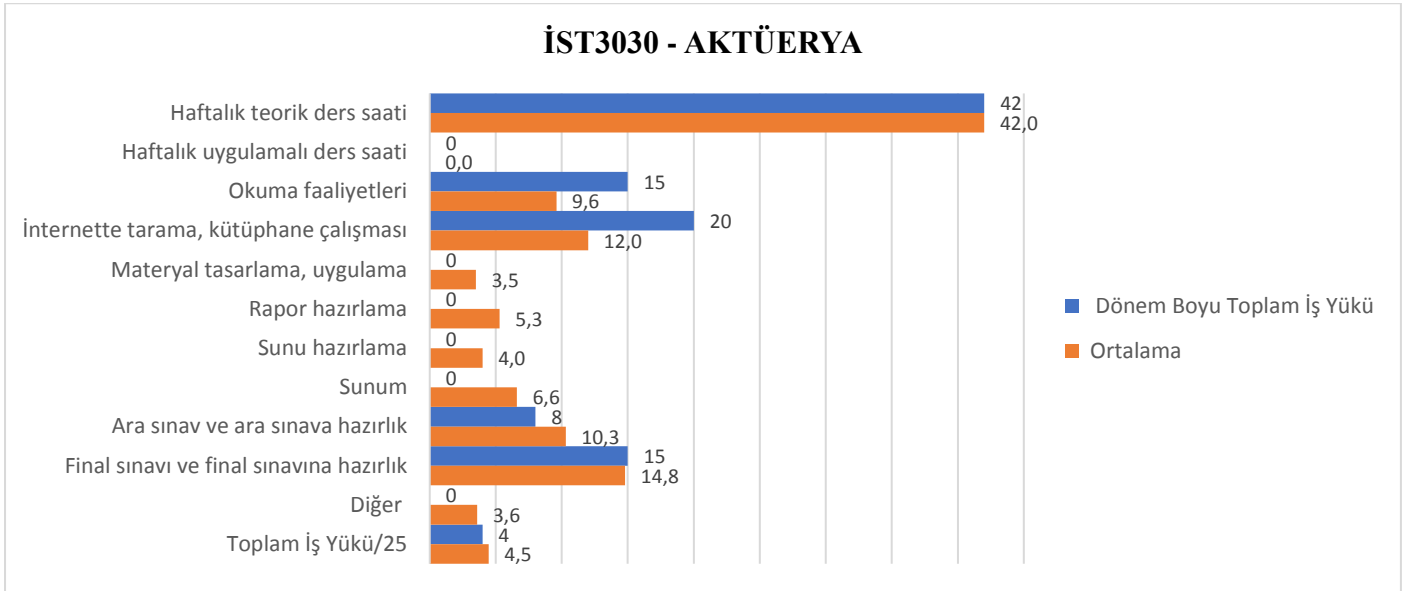
İST3006 – STOKASTİK SÜREÇLER



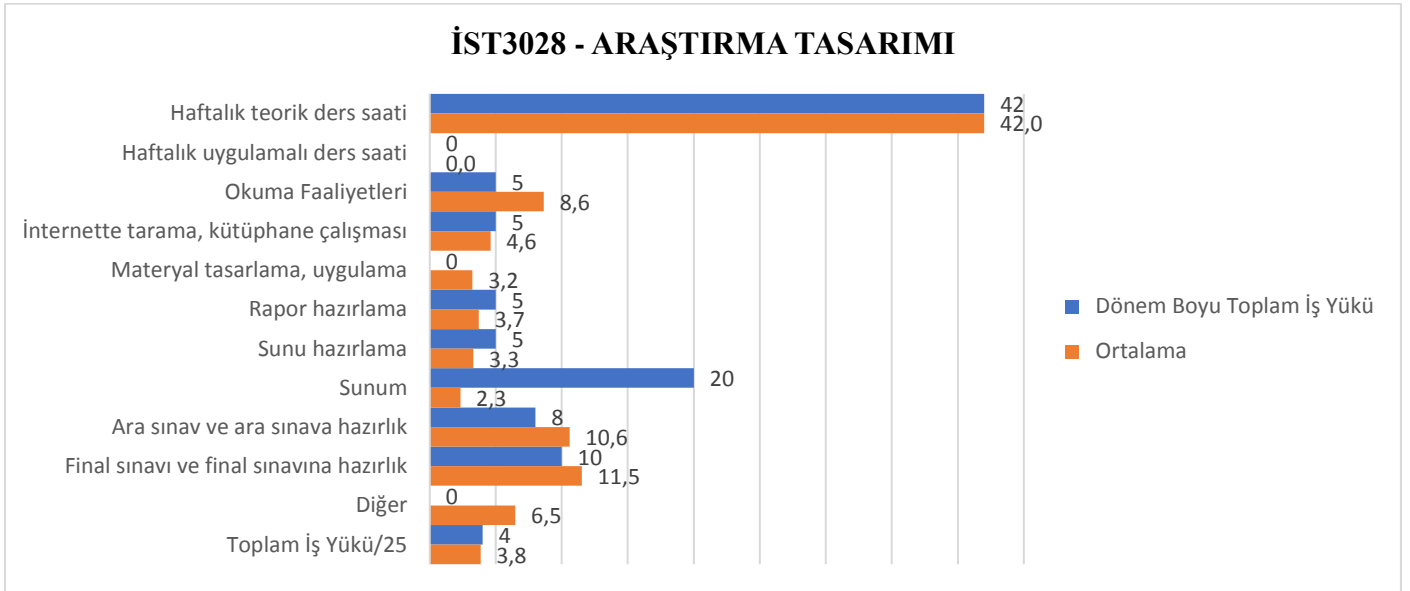
İST3022 – VERİ TABANI SİSTEMLERİ VE PROGRAMLAMA



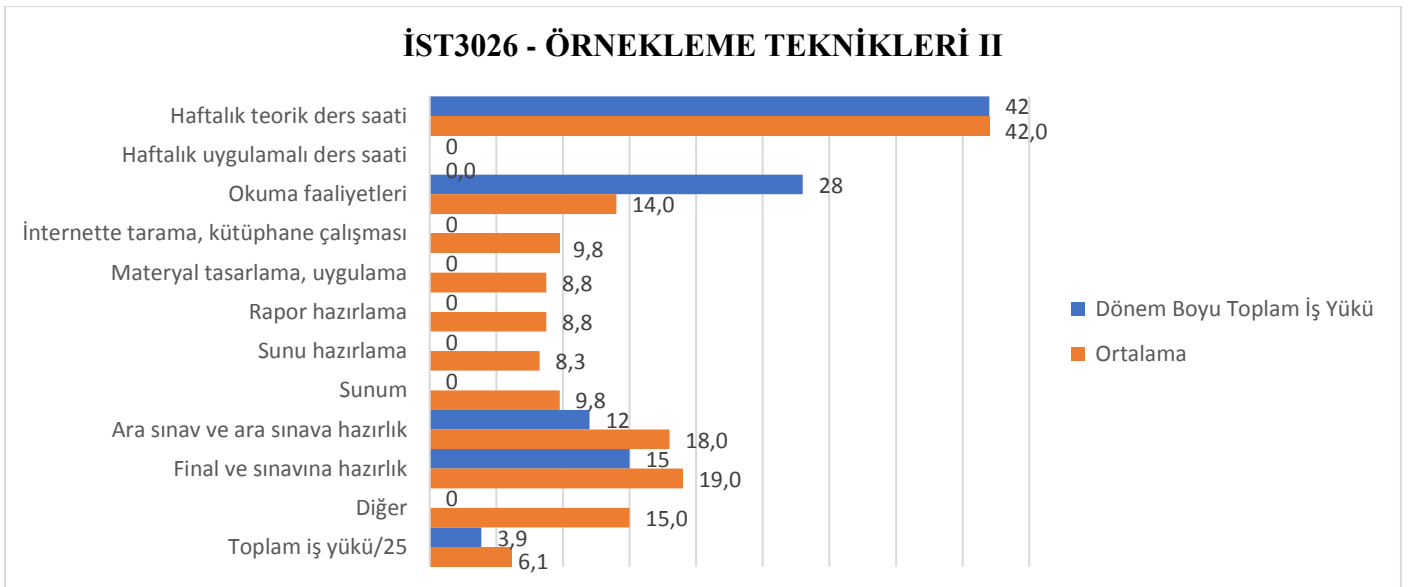
İST3030 – AKTÜERYA



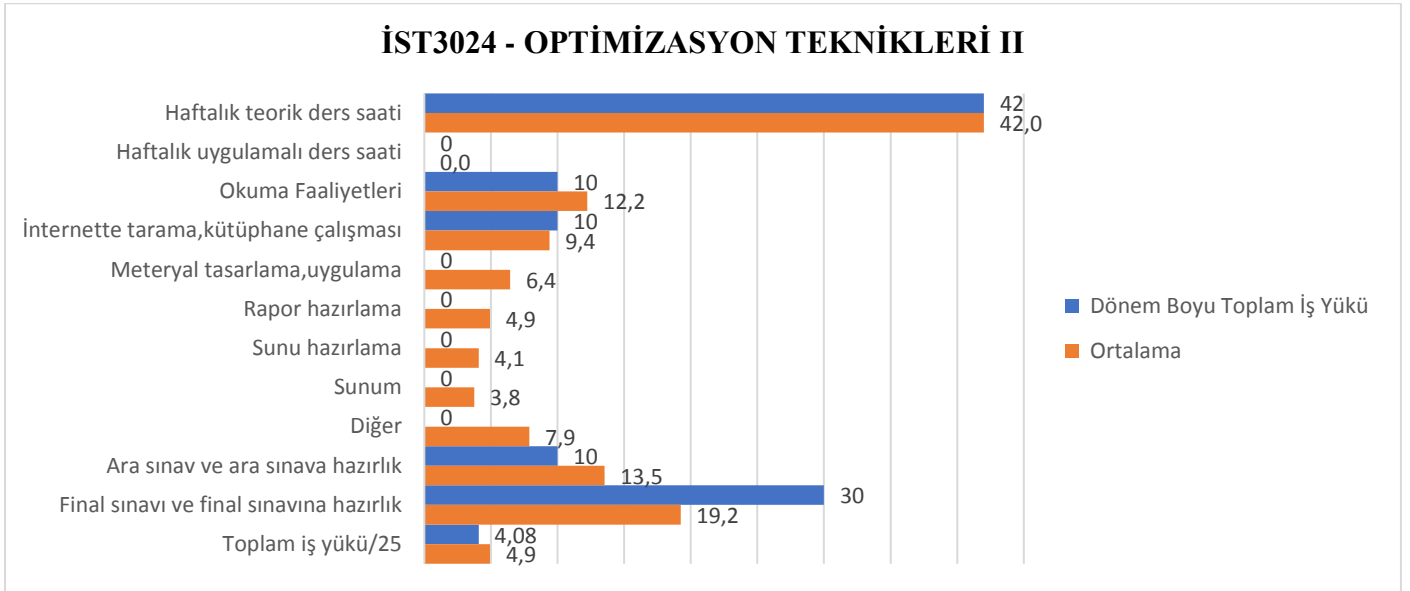
İST3028 – ARAŞTIRMA TASARIMI



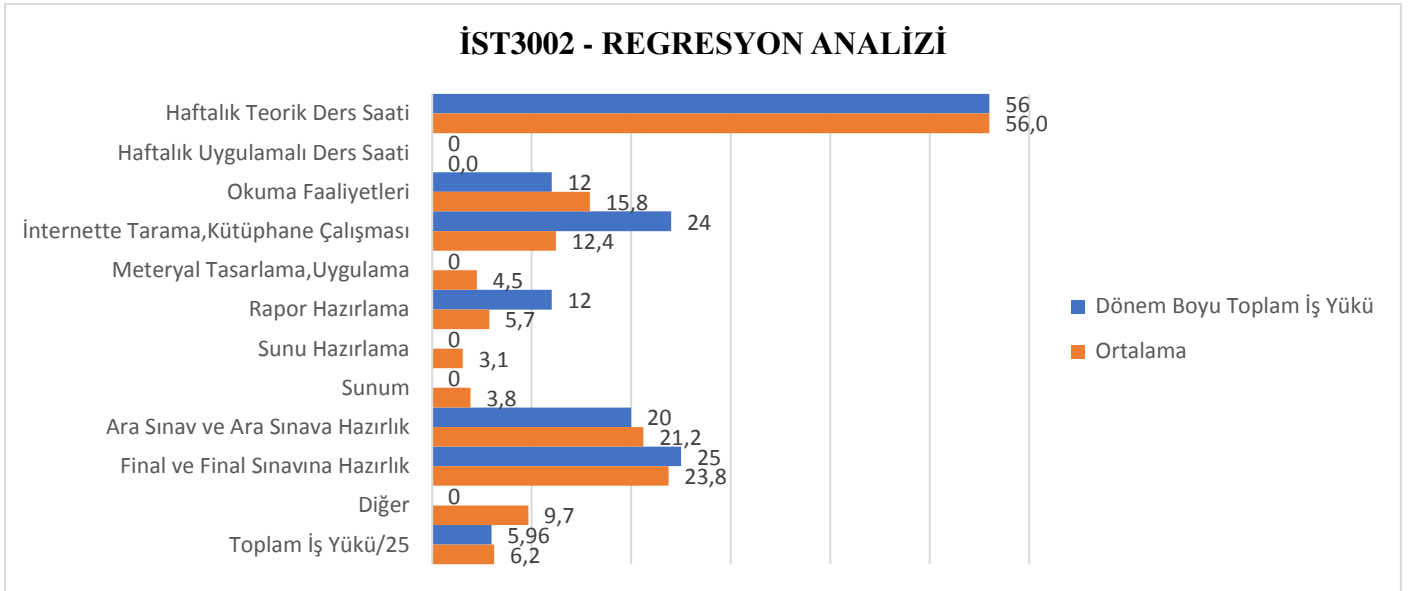
İST3026 – ÖRNEKLEME TEKNİKLERİ II



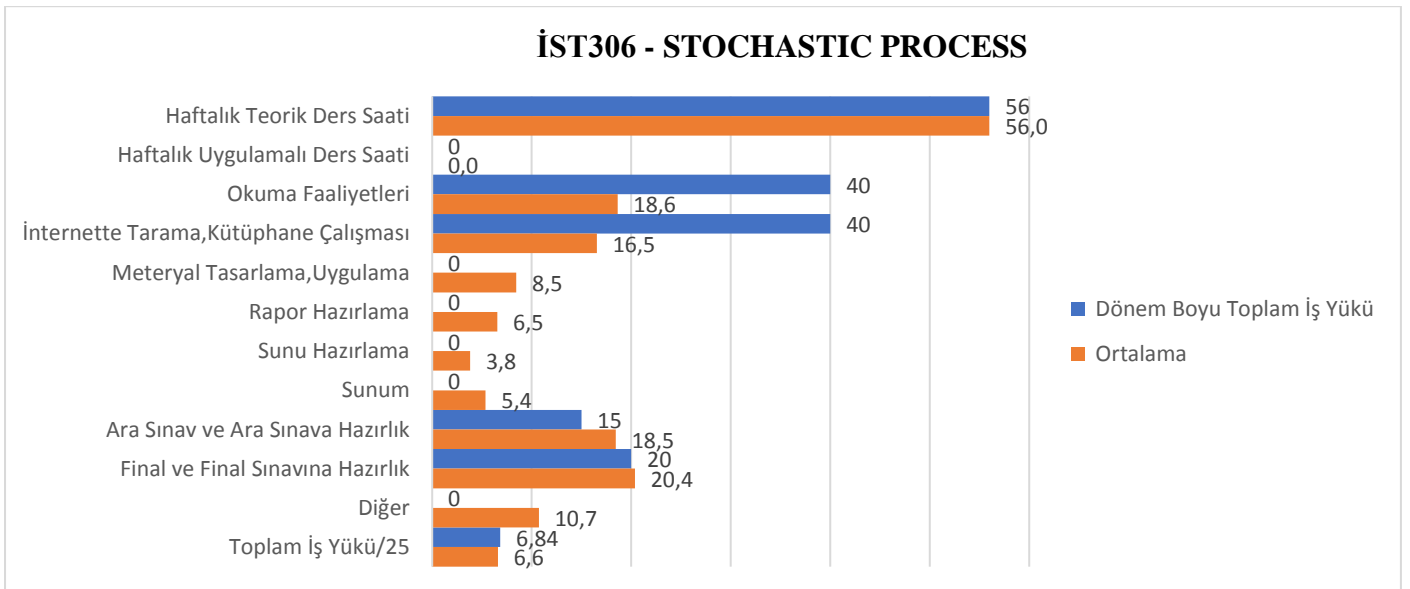
İST3024 – OPTİMİZASYON TEKNİKLERİ II



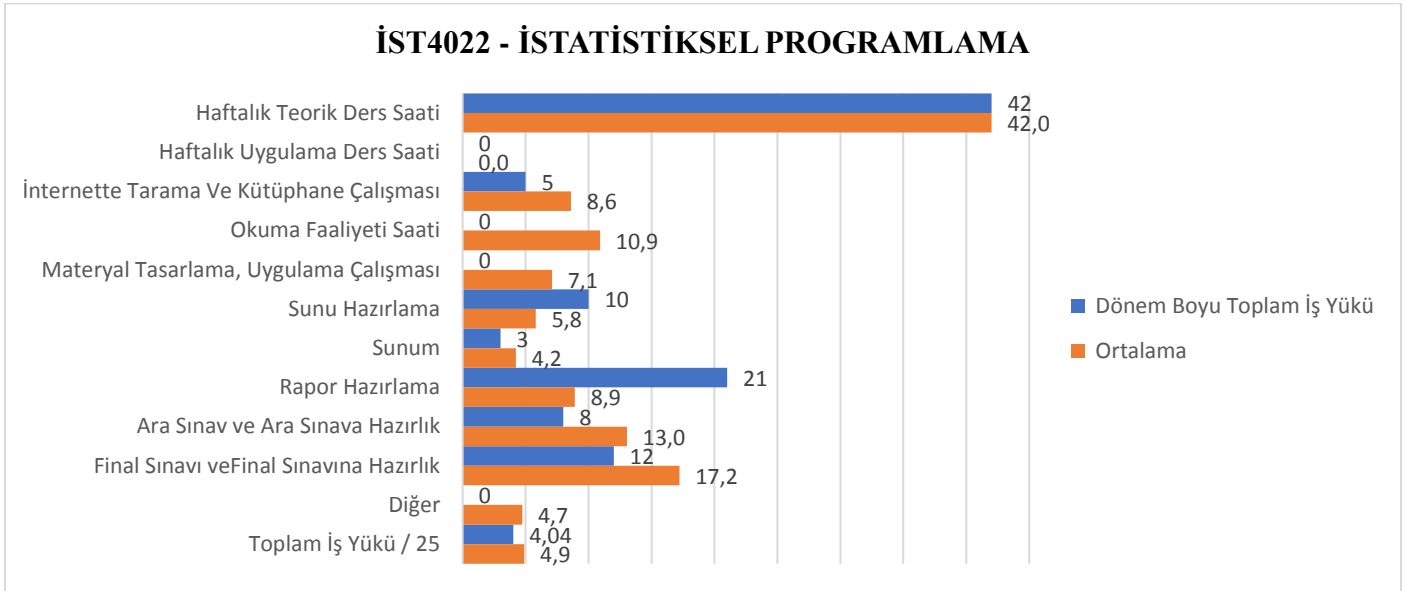
İST3002 – REGRESYON ANALİZİ



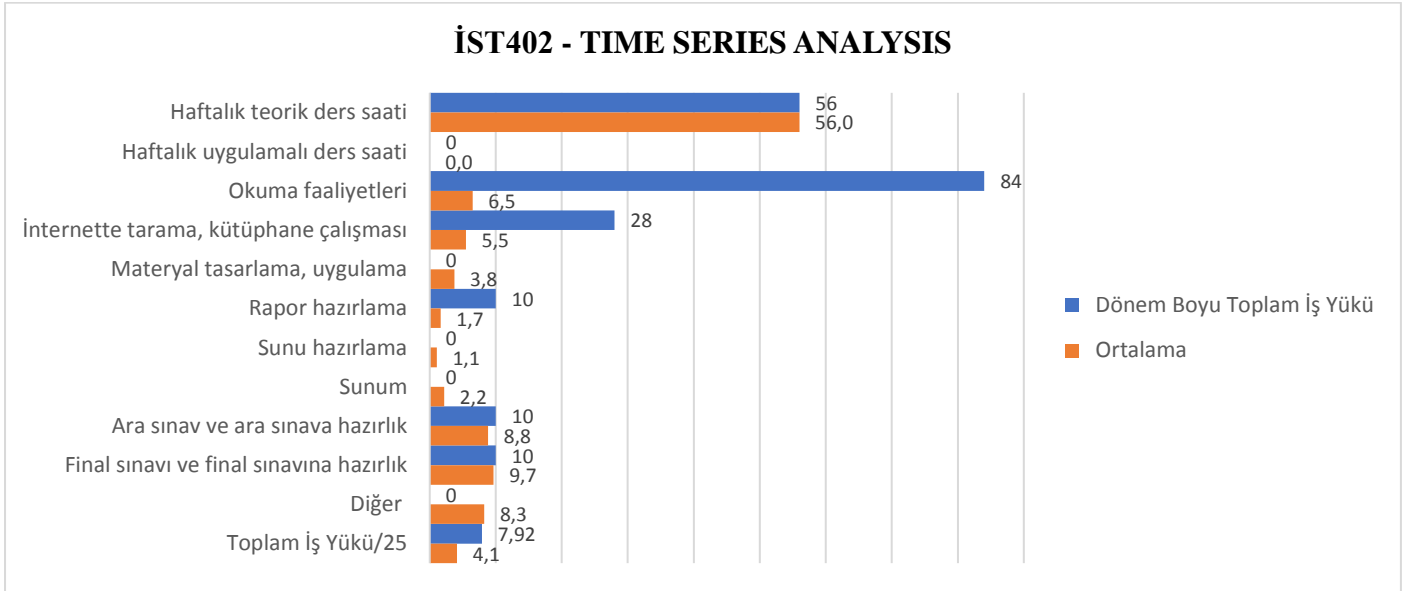
İST306 – STOCHASTIC PROCESS



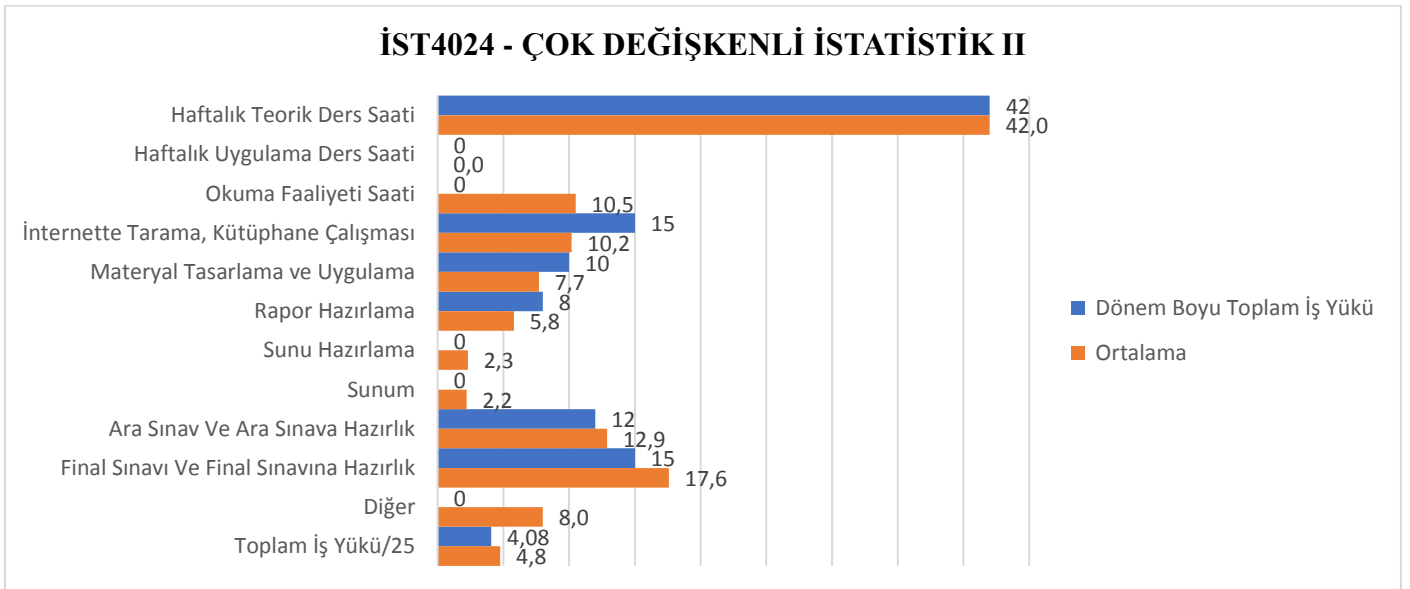
İST4022 – İSTATİSTİKSEL PROGRAMLAMA



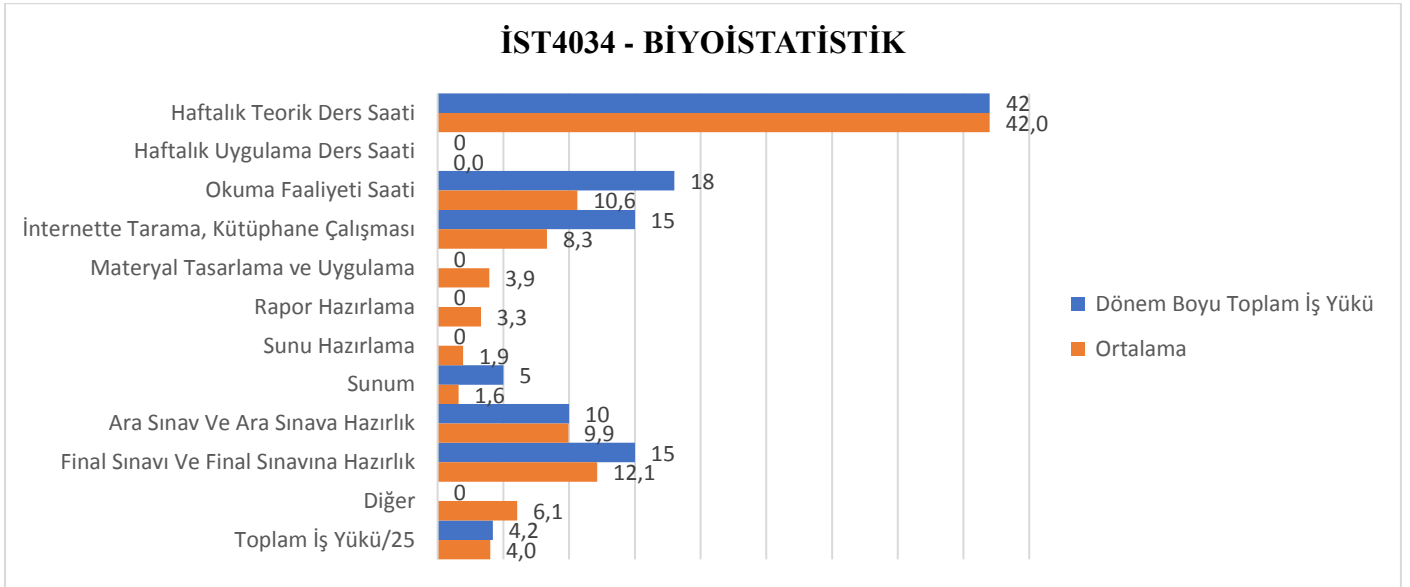
İST402 – TIME SERIES ANALYSIS



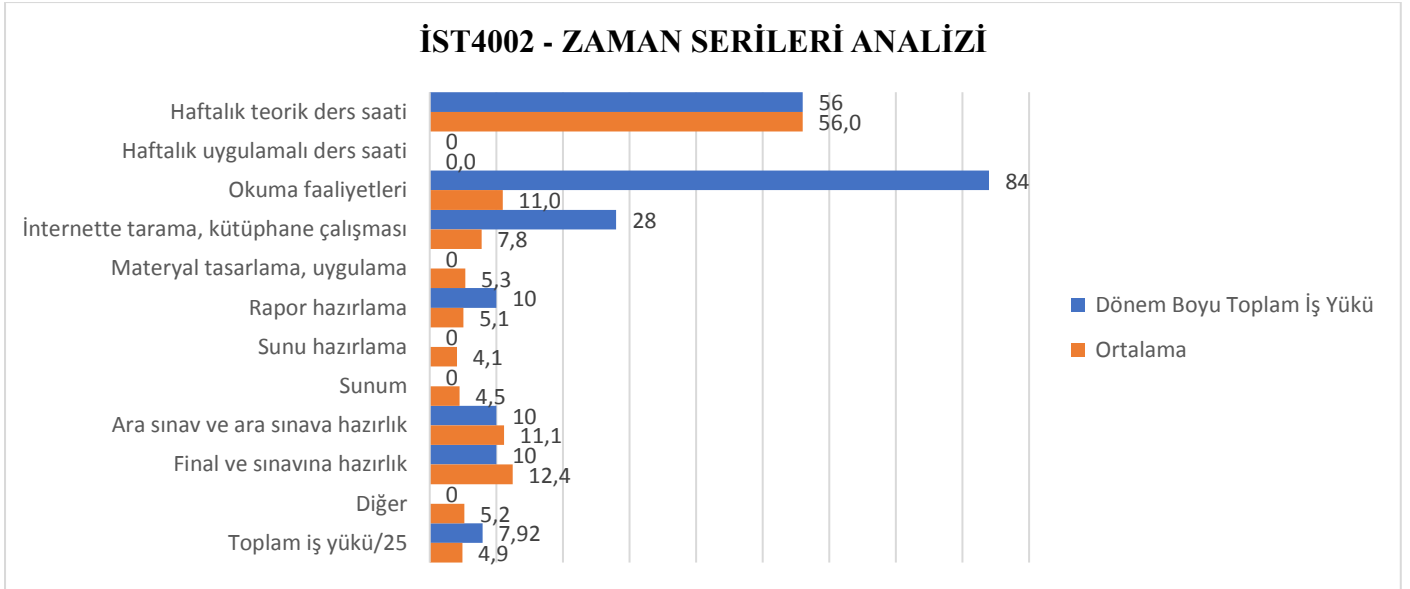
İST4024 – ÇOK DEĞİŞKENLİ İSTATİSTİK II



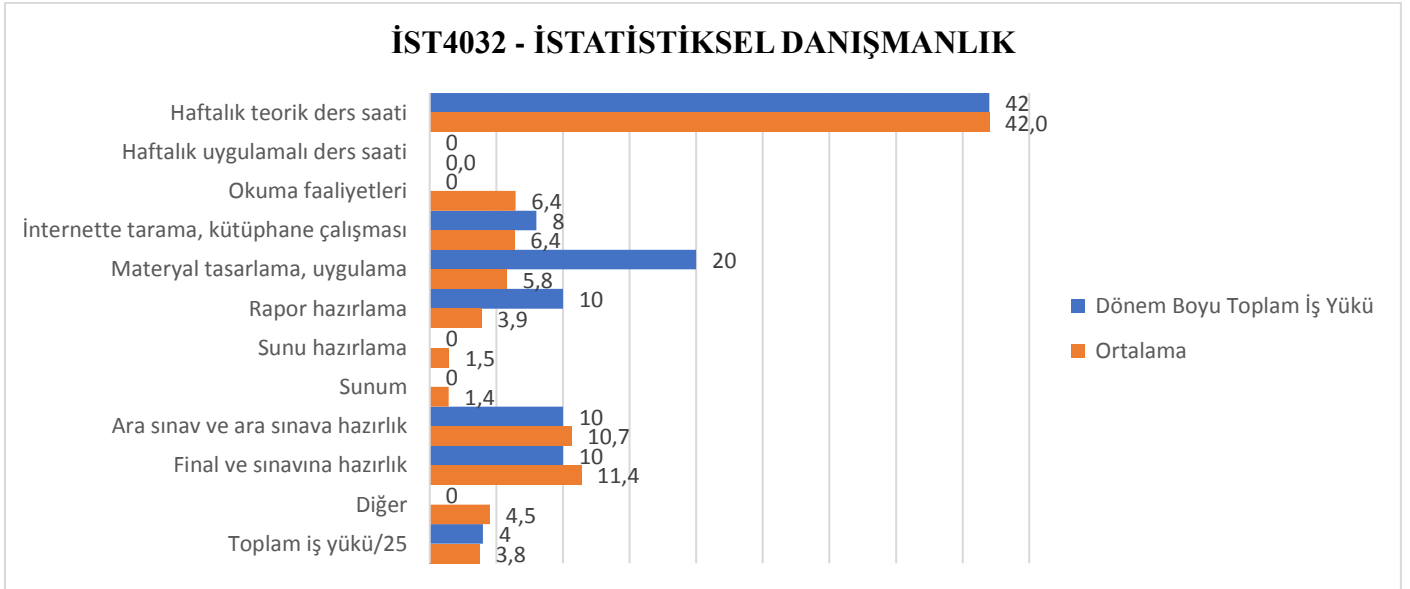
İST4034 – BİYOİSTATİSTİK



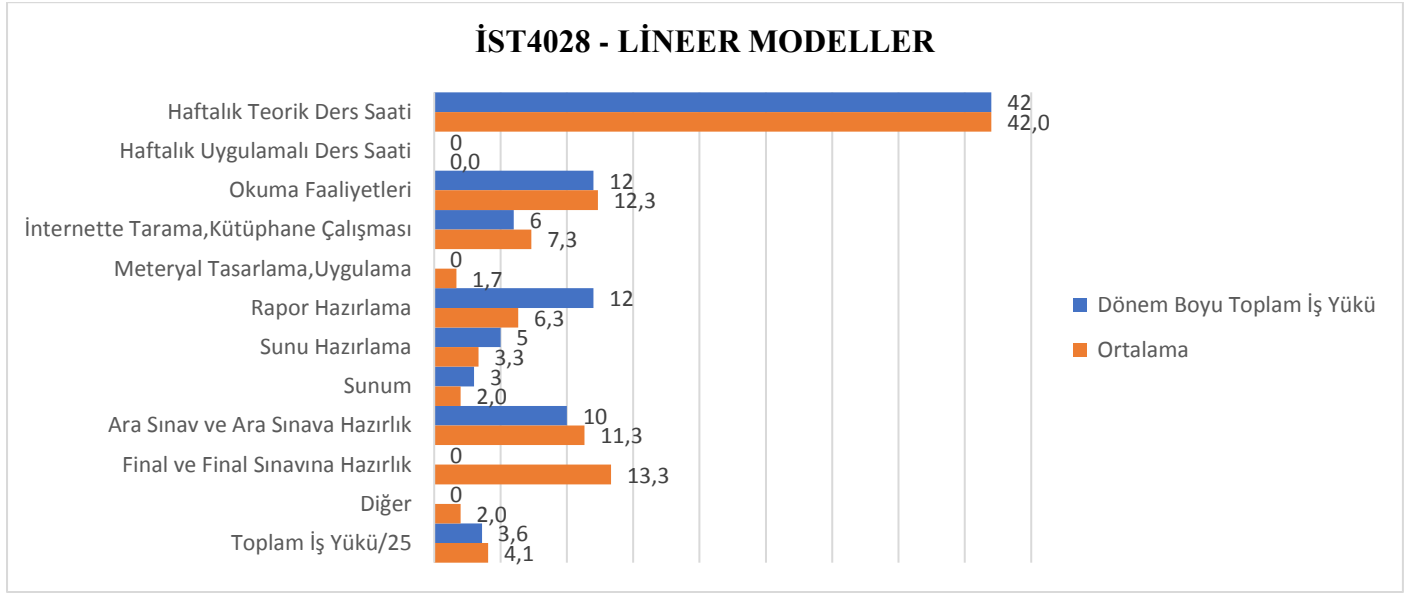
İST4002 – ZAMAN SERİLERİ ANALİZİ



İST4032 – İSTATİSTİKSEL DANIŞMANLIK



İST4028 – LİNEER MODELLER



NOT : Statistical Software Dersinin Anketine Hiç Cevap Verilmediği İçin Grafiği Yapılamamıştır.